

COLIMA

---RED FEDERAL LIBRE---

1 Colima - Cd. Guzmán	MEX-054
2 Colima - Ent. Tecomán	MEX-110
3 Ent. Playa Azul - Manzanillo	MEX-200
4 Jiquilpan - Colima	MEX-110
5 Libramiento Campos - Alameda	MEX-200
6 Libramiento de Colima	MEX-054
7 Libramiento de Manzanillo (Libre)	MEX-200
8 Libramiento de Manzanillo Norte	MEX-200
9 Manzanillo - Puerto Vallarta	MEX-200
10 Minatitlán - Ent. Pez Vela	MEX-098
11 Paso por La Salada	MEX-110
12 Paso por Los Asmoles	MEX-110
13 Ramal a Cerro de Los Juanes	MEX-098
14 Ramal a Cerro de Ortega	MEX-200
15 Ramal a Cuytlán	MEX-200
16 Tecomán - Boca de Pascuales	MEX-200

---RED FEDERAL DE CUOTA---

17 Armería - Manzanillo (Cuota)	MEX-200D
18 Guadalajara - Colima (Cuota)	MEX-054D

---RED ESTATAL LIBRE---

19 Armería - Playa El Paraíso	COL
20 Colima - Comala	COL-016
21 Colima - Coquimatlán	COL-034
22 Comala - San Antonio	COL-016
23 Coquimatlán - Pueblo Juárez	COL-034
24 Costera Laguna de Cuytlán	COL
25 Cuauhtémoc - Colima	COL-019
26 Libramiento de Comala	COL-016
27 Libramiento de Tecomán	COL
28 Libramiento Poniente Arco Sur de Tecomán	COL
29 Libramiento Poniente de Colima	COL
30 Los Limones - Loma de Juárez	COL
31 Puerta de Caleras - Madrid	COL-014
32 Ramal a Aeropuerto de Colima	COL
33 Ramal a Aeropuerto Manzanillo	COL
34 Ramal a Camotlán de Miraflores	COL
35 Ramal a Ixtlahuacán	COL-005
36 Ramal a Las Brisas	COL
37 Ramal a Los Tepames	COL-004
38 Ramal a Rancho Valle Nuevo	COL
39 Ramal a Rincón de López	COL
40 Ramal a Tecuanillo	COL-009
41 T. C. (Guadalajara - Colima Cuota) - Quesería	COL-001
42 Tecomán - La Mascota	COL
43 Trapichillos - Estación Alzada	COL-003
44 Villa de Álvarez - Minatitlán	COL

06 COLIMA



COLIMA

1 CARR: Colima - Cd. Guzmán

CLAVE: 00117

RUTA: MEX-054

AÑO: 2025

LUGAR	ESTACION				CLASIFICACION VEHICULAR EN PORCIENTO										COORDENADAS					
	KM	TE	SC	TDPA	M	A	B	C2	C3	T3S2	T3S3	T3S2R4	OTROS	A	B	C	K'	D	LATITUD	LONGITUD
Colima	0.00																			
T. Der. Libramiento de Colima	4.00	3	1	17840	2.4	83.0	1.4	3.5	1.0	4.4	1.7	2.0	0.6	85.4	1.4	13.2	0.080	0.516	19.268222	-103.676292
T. Der. Libramiento de Colima	4.00	3	2	19056	2.6	81.8	1.4	3.5	1.0	4.7	1.9	2.4	0.7	84.4	1.4	14.2	0.068	0.516	19.267953	-103.677409
El Trapiche	7.00	1	1	14847	2.3	82.8	1.3	3.6	1.1	4.4	1.3	2.5	0.7	85.1	1.3	13.6	0.099	0.501	19.282386	-103.662201
El Trapiche	7.00	1	2	14921	2.5	81.2	1.3	4.0	1.1	4.6	1.6	2.9	0.8	83.7	1.3	15.0	0.082	0.501	19.282520	-103.662247
T. C. Guadalajara - Colima (Cuota)	8.13	1	1	15135	2.2	74.9	2.4	5.2	2.0	5.5	2.4	4.9	0.5	77.1	2.4	20.5	0.085	0.541	19.289448	-103.652829
T. C. Guadalajara - Colima (Cuota)	8.13	1	2	17855	2.4	76.6	2.0	5.0	1.8	4.7	2.5	4.3	0.7	79.0	2.0	19.0	0.078	0.541	19.289704	-103.652808
Cuahtémoc	15.00	1	0	6414	5.4	81.1	1.8	7.6	1.7	1.3	0.8	0.3	0.0	86.5	1.8	11.7	0.072	0.510	19.324267	-103.609133
Cuahtémoc	15.00	3	0	5384	2.7	88.5	1.7	5.1	0.3	0.9	0.4	0.2	0.2	91.2	1.7	7.1	0.074	0.500	19.333483	-103.590941
T. Izq. Quesería	23.21	3	0	2836	8.9	76.8	1.9	9.1	0.9	1.1	0.6	0.5	0.2	85.7	1.9	12.4	0.091	0.514	19.392476	-103.565019
Lim. Edos. Term. Jal. Ppia. Col.	26.31																			
Atenquique	58.75	1	0	1797	6.3	76.3	2.5	4.4	4.1	4.9	1.0	0.4	0.1	82.6	2.5	14.9	0.088	0.528	19.526037	-103.440010
Atenquique	58.75	3	0	2688	5.8	74.6	4.7	4.2	4.0	3.9	2.1	0.5	0.2	80.4	4.7	14.9	0.093	0.534	19.529947	-103.434434
T. Izq. Tepozal y Nevado de Colima	66.00	3	0	5116	2.8	86.6	1.7	3.9	1.9	1.7	0.9	0.4	0.1	89.4	1.7	8.9	0.082	0.540	19.570709	-103.444587
T. Der. Zapotiltic	77.45	1	0	6008	3.2	85.4	2.0	3.9	2.9	1.0	0.8	0.6	0.2	88.6	2.0	9.4	0.084	0.564	19.646023	-103.471669
Cd. Guzmán	82.20	1	1	12641	6.1	87.5	0.8	2.8	1.6	0.5	0.3	0.3	0.1	93.6	0.8	5.6	0.081	0.533	19.676065	-103.475898
Cd. Guzmán	82.20	1	2	13606	6.0	87.3	0.7	3.0	1.7	0.7	0.3	0.2	0.1	93.3	0.7	6.0	0.078	0.533	19.676541	-103.475771

2 CARR: Colima - Ent. Tecomán

CLAVE: 06119

RUTA: MEX-110

AÑO: 2025

LUGAR	ESTACION				CLASIFICACION VEHICULAR EN PORCIENTO										COORDENADAS					
	KM	TE	SC	TDPA	M	A	B	C2	C3	T3S2	T3S3	T3S2R4	OTROS	A	B	C	K'	D	LATITUD	LONGITUD
T. C. Jiquilpan - Colima	0.00	3	1	19459	4.7	76.0	2.2	5.6	1.2	5.4	2.0	2.1	0.8	80.7	2.2	17.1	0.076	0.508	19.215213	-103.735110
T. C. Jiquilpan - Colima	0.00	3	2	18847	4.6	75.9	2.3	5.6	1.3	5.3	2.1	2.1	0.8	80.5	2.3	17.2	0.074	0.508	19.214976	-103.734505
T. Izq. Libramiento Poniente de Colima	2.00	3	1	13886	2.8	78.4	2.7	4.1	1.6	4.9	1.7	3.2	0.6	81.2	2.7	16.1	0.090	0.503	19.204543	-103.743644
T. Izq. Libramiento Poniente de Colima	2.00	3	2	14040	3.0	78.5	2.6	4.0	1.6	4.7	1.8	3.1	0.7	81.5	2.6	15.9	0.085	0.503	19.204465	-103.743466
T. Izq. Los Asmoles	13.00	3	1	12926	2.2	74.1	3.3	4.7	1.4	6.5	2.3	4.8	0.7	76.3	3.3	20.4	0.079	0.523	19.110847	-103.775854
T. Izq. Los Asmoles	13.00	3	2	11772	2.4	73.4	3.4	4.5	1.6	6.6	2.4	5.0	0.7	75.8	3.4	20.8	0.102	0.523	19.110800	-103.775745
Ramal a Ixtlahuacán	24.50	3	1	8075	4.9	73.4	2.2	5.0	1.8	5.3	2.7	3.9	0.8	78.3	2.2	19.5	0.080	0.512	19.022561	-103.810185
Ramal a Ixtlahuacán	24.50	3	2	8464	5.0	73.3	2.1	5.2	1.7	5.2	2.8	3.8	0.9	78.3	2.1	19.6	0.087	0.512	19.022367	-103.809487
T. Der. Caleras	34.55	1	1	12986	3.4	74.1	3.2	5.4	1.8	5.8	2.4	3.1	0.8	77.5	3.2	19.3	0.084	0.519	18.981467	-103.853457
T. Der. Caleras	34.55	1	2	14033	3.5	74.3	2.9	5.3	1.7	5.9	2.5	3.2	0.7	77.8	2.9	19.3	0.090	0.519	18.981399	-103.853400
T. C. Ent. Playa Azul - Manzanillo	40.10	1	1	15363	4.3	75.7	4.7	2.7	2.0	5.8	2.0	1.9	0.9	80.0	4.7	15.3	0.095	0.505	18.964005	-103.874546
T. C. Ent. Playa Azul - Manzanillo	40.10	1	2	15063	4.4	76.0	4.6	2.7	1.9	5.7	2.1	1.8	0.8	80.4	4.6	15.0	0.105	0.505	18.963592	-103.874914

COLIMA

3 CARR: Ent. Playa Azul - Manzanillo

CLAVE: 00495

RUTA: MEX-200

AÑO: 2025

LUGAR	ESTACION				CLASIFICACION VEHICULAR EN PORCIENTO										COORDENADAS					
	KM	TE	SC	TDPA	M	A	B	C2	C3	T3S2	T3S3	T3S2R4	OTROS	A	B	C	K'	D	LATITUD	LONGITUD
T. C. Carapan - Playa Azul	0.00	3	0	5495	6.9	81.2	1.3	6.3	2.0	1.5	0.3	0.3	0.2	88.1	1.3	10.6	0.098	0.519	18.019750	-102.340701
Caleta de Campos	50.24	1	0	3974	11.7	76.7	0.8	6.9	1.6	1.4	0.4	0.4	0.1	88.4	0.8	10.8	0.097	0.501	18.077276	-102.745707
Caleta de Campos	50.24	3	0	2344	13.3	76.3	0.8	5.6	1.8	1.5	0.4	0.2	0.1	89.6	0.8	9.6	0.104	0.515	18.080523	-102.768337
Tizupan	106.60	1	0	626	22.3	64.3	2.8	4.6	2.1	2.3	1.2	0.3	0.1	86.6	2.8	10.6	0.087	0.501	18.220808	-103.124597
Maruata	149.75	1	0	824	18.7	67.7	1.7	6.0	2.2	2.1	1.2	0.3	0.1	86.4	1.7	11.9	0.107	0.513	18.273344	-103.342268
Maruata	149.75	3	0	1398	18.3	67.6	1.4	7.1	2.1	2.1	1.2	0.1	0.1	85.9	1.4	12.7	0.084	0.500	18.277738	-103.351807
T. Der. Aquila	201.10	1	0	1708	8.2	77.6	2.0	6.8	2.1	2.3	0.6	0.4	0.0	85.8	2.0	12.2	0.085	0.519	18.554394	-103.599879
T. Der. Aquila	201.10	3	0	2067	10.7	73.1	1.9	7.2	2.2	3.5	1.3	0.1	0.0	83.8	1.9	14.3	0.098	0.509	18.566609	-103.623693
Lim. Edos. Term. Mich. Ppia. Col.	229.60																			
Cerro de Ortega	233.20	1	0	6437	15.7	71.7	1.6	3.7	1.2	2.3	2.9	0.6	0.3	87.4	1.6	11.0	0.084	0.514	18.737500	-103.723861
El Balcón	240.10	1	0	5511	13.4	69.7	1.8	5.0	1.9	4.4	2.7	0.8	0.3	83.1	1.8	15.1	0.102	0.509	18.781488	-103.766855
El Balcón	240.10	3	0	6342	10.3	68.2	1.3	9.0	2.2	4.8	2.9	0.8	0.5	78.5	1.3	20.2	0.083	0.512	18.788156	-103.785302
Cofradía de Morelos	252.45	1	0	10829	12.6	70.3	1.5	6.5	2.4	3.4	2.5	0.5	0.3	82.9	1.5	15.6	0.083	0.507	18.862703	-103.836674
Cofradía de Morelos	252.45	3	1	5218	11.9	71.6	1.5	7.5	2.1	2.4	1.8	0.7	0.5	83.5	1.5	15.0	0.097	0.519	18.874400	-103.844159
Cofradía de Morelos	252.45	3	2	5640	11.8	72.3	1.4	7.3	1.9	2.6	1.7	0.6	0.4	84.1	1.4	14.5	0.126	0.519	18.874521	-103.844337
T. Libramiento de Tecomán	256.00	1	1	5399	19.2	67.6	1.2	5.2	2.1	2.5	1.1	0.7	0.4	86.8	1.2	12.0	0.116	0.521	18.894546	-103.857290
T. Libramiento de Tecomán	256.00	1	2	5489	19.3	67.1	1.2	5.4	2.2	2.5	1.0	0.9	0.4	86.4	1.2	12.4	0.127	0.521	18.894501	-103.857357
Tecomán	258.15																			
T. C. Colima - Ent. Tecomán	263.75	3	1	15644	5.6	76.2	2.8	3.8	1.5	4.6	1.3	3.4	0.8	81.8	2.8	15.4	0.083	0.514	18.944662	-103.910335
T. C. Colima - Ent. Tecomán	263.75	3	2	14780	5.4	76.2	2.6	3.6	1.6	4.9	1.4	3.5	0.8	81.6	2.6	15.8	0.089	0.514	18.944571	-103.910344
Ent. Armería	267.55																			
T. Der. Rincón de López	269.70	1	0	6572	12.7	62.6	2.1	5.9	3.3	10.2	2.6	0.6	0.0	75.3	2.1	22.6	0.083	0.506	18.949764	-103.937851
Armería	272.80	1	0	6354	14.0	61.9	2.2	9.4	3.1	6.8	2.1	0.5	0.0	75.9	2.2	21.9	0.084	0.519	18.942242	-103.947384
T. Izq. Cuyutlán	278.70	1	0	3951	8.8	73.1	2.7	5.6	3.2	4.7	1.6	0.2	0.1	81.9	2.7	15.4	0.110	0.506	18.935546	-104.018710
Santa Rita	292.50	1	0	3731	9.6	68.5	3.5	6.5	2.4	5.2	2.6	1.4	0.3	78.1	3.5	18.4	0.083	0.527	18.985356	-104.065414
Santa Rita	292.50	3	0	3843	10.9	65.4	3.1	7.1	2.2	7.8	2.0	1.1	0.4	76.3	3.1	20.6	0.086	0.504	19.013346	-104.099194
Las Nuevas Juntas	309.60	1	0	5287	9.8	56.3	3.3	7.7	4.9	12.0	3.6	1.6	0.8	66.1	3.3	30.6	0.093	0.512	19.040949	-104.215815
T. Der. Libramiento de Manzanillo (Libre)	312.65	1	0	13619	11.7	64.6	2.3	5.5	3.0	7.5	3.6	1.3	0.5	76.3	2.3	21.4	0.082	0.505	19.055531	-104.235210
T. Der. Libramiento de Manzanillo (Libre)	312.65	3	0	6244	23.4	68.2	0.8	4.1	1.8	0.6	0.1	0.9	0.1	91.6	0.8	7.6	0.085	0.515	19.055665	-104.243527
Manzanillo	321.12	1	0	11252	13.0	79.7	0.5	4.0	1.0	0.8	0.6	0.3	0.1	92.7	0.5	6.8	0.072	0.515	19.049517	-104.292809

COLIMA

4 CARR: Jiquilpan - Colima

CLAVE: 00156

RUTA: MEX-110

AÑO: 2025

LUGAR	ESTACION				CLASIFICACION VEHICULAR EN PORCIENTO										COORDENADAS					
	KM	TE	SC	TDPA	M	A	B	C2	C3	T3S2	T3S3	T3S2R4	OTROS	A	B	C	K'	D	LATITUD	LONGITUD
Jiquilpan	0.00	3	0	5240	4.7	76.6	1.4	10.3	2.0	3.1	0.7	0.8	0.4	81.3	1.4	17.3	0.077	0.515	19.995333	-102.744897
San José de Gracia	37.93	1	0	6344	3.5	86.8	0.4	7.2	1.1	0.8	0.1	0.1	0.0	90.3	0.4	9.3	0.073	0.511	20.001161	-103.013322
Lim. Edos. Term. Mich. Ppia. Jal.	41.00																			
Mazamilla	48.65	1	0	5149	4.6	89.7	0.6	2.4	1.4	1.0	0.2	0.1	0.0	94.3	0.6	5.1	0.077	0.526	19.940327	-103.008902
Mazamilla	48.65	3	0	5170	4.0	85.2	3.7	3.5	1.0	1.2	1.0	0.3	0.1	89.2	3.7	7.1	0.114	0.616	19.923800	-103.054321
Villa de Contla	84.25	3	0	5709	9.4	79.7	1.3	2.8	2.4	2.6	0.9	0.8	0.1	89.1	1.3	9.6	0.076	0.525	19.747987	-103.184952
T. Izq. Tamazula de Gordiano (2º Acceso)	96.70	3	0	10094	11.8	79.8	1.3	2.4	1.6	2.3	0.4	0.4	0.0	91.6	1.3	7.1	0.073	0.514	19.682945	-103.262543
T. Der. Cd. Guzmán	108.50	1	0	7625	3.5	83.9	1.6	3.8	3.1	2.9	0.7	0.5	0.0	87.4	1.6	11.0	0.074	0.516	19.647504	-103.335800
T. Der. Cd. Guzmán	108.50	3	0	3787	5.5	77.8	1.6	3.4	5.2	4.6	1.1	0.7	0.1	83.3	1.6	15.1	0.070	0.579	19.645078	-103.335462
T. Der. Cerca Lisa	110.00	1	0	2046	9.5	77.1	2.2	3.2	6.5	0.8	0.3	0.4	0.0	86.6	2.2	11.2	0.088	0.558	19.631260	-103.331408
Tecalitlán	132.00	3	0	3924	5.5	86.4	1.5	4.0	1.7	0.5	0.1	0.3	0.0	91.9	1.5	6.6	0.082	0.586	19.462276	-103.318920
T. Der. Atenquique	137.67	3	0	1919	4.7	82.4	1.7	6.0	2.9	1.0	1.0	0.2	0.1	87.1	1.7	11.2	0.087	0.512	19.457100	-103.348246
Pihuamo	168.19	3	0	3540	9.0	83.2	0.8	5.0	1.4	0.2	0.3	0.1	0.0	92.2	0.8	7.0	0.071	0.557	19.248956	-103.395202
Lim. Edos. Term. Jal. Ppia. Col.	189.60																			
T. Der. Estación Alzada	198.60	3	0	1799	6.1	74.7	1.9	7.4	2.2	5.2	2.0	0.3	0.2	80.8	1.9	17.3	0.082	0.515	19.163392	-103.534995
T. Izq. Los Tepames	214.20	1	0	2666	5.7	77.7	1.2	7.0	2.1	4.4	1.2	0.4	0.3	83.4	1.2	15.4	0.064	0.540	19.175601	-103.655907
T. Izq. Los Tepames	214.20	3	0	3570	5.7	81.9	1.2	7.1	0.7	1.6	1.1	0.5	0.2	87.6	1.2	11.2	0.081	0.528	19.175356	-103.664068
X. C. Libramiento de Colima	220.00	1	0	10012	8.8	83.7	0.7	2.3	1.3	1.0	1.6	0.5	0.1	92.5	0.7	6.8	0.067	0.512	19.208945	-103.721127
Colima	222.00	1	1	10981	8.4	84.8	0.8	4.7	0.5	0.2	0.1	0.1	0.4	93.2	0.8	6.0	0.096	0.501	19.218226	-103.722000
Colima	222.00	1	2	10937	8.4	85.0	0.4	4.7	0.4	0.4	0.3	0.2	0.2	93.4	0.4	6.2	0.098	0.501	19.218179	-103.722119

5 CARR: Libramiento Campos - Alameda

CLAVE:

RUTA: MEX-200

AÑO: 2025

LUGAR	ESTACION				CLASIFICACION VEHICULAR EN PORCIENTO										COORDENADAS					
	KM	TE	SC	TDPA	M	A	B	C2	C3	T3S2	T3S3	T3S2R4	OTROS	A	B	C	K'	D	LATITUD	LONGITUD
T. C. Costera Laguna de Cuyutlán	0.00	3	0	2601	9.5	79.1	0.8	7.5	1.4	0.9	0.2	0.4	0.2	88.6	0.8	10.6	0.115	0.510	19.026359	-104.315797
T. C. Playa Azul - Manzanillo	5.00	1	0	3089	10.7	79.2	0.8	6.6	0.8	0.7	0.6	0.4	0.2	89.9	0.8	9.3	0.109	0.520	19.047289	-104.301502

6 CARR: Libramiento de Colima

CLAVE: 06573

RUTA: MEX-054

AÑO: 2025

LUGAR	ESTACION				CLASIFICACION VEHICULAR EN PORCIENTO										COORDENADAS					
	KM	TE	SC	TDPA	M	A	B	C2	C3	T3S2	T3S3	T3S2R4	OTROS	A	B	C	K'	D	LATITUD	LONGITUD
T. C. Colima - Cd. Guzmán	0.00	3	1	9768	2.2	74.7	3.0	5.5	2.0	5.0	2.4	4.3	0.9	76.9	3.0	20.1	0.072	0.526	19.262302	-103.682527
T. C. Colima - Cd. Guzmán	0.00	3	2	8787	2.3	71.1	3.2	6.7	2.2	5.9	2.4	5.4	0.8	73.4	3.2	23.4	0.089	0.526	19.263125	-103.681589
T. C. Colima - Ent. Tecomán	9.00	1	1	23909	1.3	82.6	1.5	4.5	1.7	3.4	1.9	2.3	0.8	83.9	1.5	14.6	0.076	0.525	19.228814	-103.707780

COLIMA

6 CARR : Libramiento de Colima

CLAVE: 06573

RUTA: MEX-054

AÑO: 2025

LUGAR	ESTACION				CLASIFICACION VEHICULAR EN PORCIENTO													COORDENADAS		
	KM	TE	SC	TDPA	M	A	B	C2	C3	T3S2	T3S3	T3S2R4	OTROS	A	B	C	K'	D	LATITUD	LONGITUD
T. C. Colima - Ent. Tecmán	9.00	1	2	21637	1.8	81.2	1.5	4.9	1.8	3.4	2.2	2.5	0.7	83.0	1.5	15.5	0.086	0.525	19.228806	-103.707667

7 CARR : Libramiento de Manzanillo (Libre)

CLAVE: 06574

RUTA: MEX-200

AÑO: 2025

LUGAR	ESTACION				CLASIFICACION VEHICULAR EN PORCIENTO													COORDENADAS		
	KM	TE	SC	TDPA	M	A	B	C2	C3	T3S2	T3S3	T3S2R4	OTROS	A	B	C	K'	D	LATITUD	LONGITUD
T. C. Ent. Playa Azul - Manzanillo	0.00	3	0	13039	10.0	63.2	2.3	5.1	3.9	9.2	2.0	3.9	0.4	73.2	2.3	24.5	0.069	0.514	19.057525	-104.244241
T. C. Manzanillo - Puerto Vallarta	6.30	1	1	9158	9.6	66.6	2.8	4.8	3.0	5.7	2.4	4.4	0.7	76.2	2.8	21.0	0.086	0.512	19.072123	-104.279097
T. C. Manzanillo - Puerto Vallarta	6.30	1	2	9604	9.4	66.1	3.0	5.0	3.1	5.9	2.6	4.2	0.7	75.5	3.0	21.5	0.092	0.512	19.072157	-104.279400

8 CARR : Libramiento de Manzanillo Norte

CLAVE: 06122

RUTA: MEX-200

AÑO: 2025

LUGAR	ESTACION				CLASIFICACION VEHICULAR EN PORCIENTO													COORDENADAS		
	KM	TE	SC	TDPA	M	A	B	C2	C3	T3S2	T3S3	T3S2R4	OTROS	A	B	C	K'	D	LATITUD	LONGITUD
T. C. Armeria - Manzanillo (Cuota)	0.00	3	0	24369	11.4	65.8	2.3	5.6	2.9	5.0	1.9	4.2	0.9	77.2	2.3	20.5	0.074	0.512	19.083603	-104.268280
T. C. Minatitlán - Ent. Pez Vela	3.00	3	0	27461	10.7	78.0	1.3	4.8	1.6	1.9	0.7	0.8	0.2	88.7	1.3	10.0	0.085	0.501	19.096159	-104.277359
T. Izq. Manzanillo	6.60	3	0	32327	14.8	78.6	1.1	1.9	1.6	1.1	0.4	0.4	0.1	93.4	1.1	5.5	0.080	0.509	19.120060	-104.311676
T. Der. Chandiablo	12.00	1	1	9254	14.5	76.2	1.7	4.1	1.5	1.1	0.5	0.3	0.1	90.7	1.7	7.6	0.112	0.515	19.136831	-104.338105
T. Der. Chandiablo	12.00	1	2	8728	14.7	75.3	1.8	4.3	1.5	1.3	0.6	0.4	0.1	90.0	1.8	8.2	0.093	0.515	19.136793	-104.338135
T. C. Manzanillo - Puerto Vallarta	19.00	1	0	6591	6.3	81.0	2.3	4.4	2.3	1.9	1.0	0.6	0.2	87.3	2.3	10.4	0.077	0.504	19.127206	-104.396221

9 CARR : Manzanillo - Puerto Vallarta

CLAVE: 00070

RUTA: MEX-200

AÑO: 2025

LUGAR	ESTACION				CLASIFICACION VEHICULAR EN PORCIENTO													COORDENADAS		
	KM	TE	SC	TDPA	M	A	B	C2	C3	T3S2	T3S3	T3S2R4	OTROS	A	B	C	K'	D	LATITUD	LONGITUD
Manzanillo	0.00	3	1	19186	10.8	80.4	1.3	5.0	0.9	0.5	0.2	0.7	0.2	91.2	1.3	7.5	0.073	0.509	19.055282	-104.299562
Manzanillo	0.00	3	2	18487	10.6	80.4	1.5	5.1	0.8	0.6	0.2	0.6	0.2	91.0	1.5	7.5	0.072	0.509	19.055371	-104.299486
T. Der. Minatitlán	4.50	1	1	16272	8.6	84.4	1.2	4.0	0.5	0.7	0.3	0.2	0.1	93.0	1.2	5.8	0.074	0.502	19.063682	-104.289639
T. Der. Minatitlán	4.50	1	2	16138	8.5	84.4	1.0	4.1	0.4	0.8	0.3	0.3	0.2	92.9	1.0	6.1	0.083	0.502	19.063728	-104.289757
Santiago	13.80	1	1	14456	11.3	77.1	0.7	5.1	1.5	3.5	0.3	0.3	0.2	88.4	0.7	10.9	0.074	0.521	19.115583	-104.348936
Santiago	13.80	1	2	15743	11.5	77.3	0.6	4.9	1.6	3.3	0.3	0.3	0.2	88.8	0.6	10.6	0.072	0.521	19.115505	-104.348966
Santiago	13.80	3	1	7707	9.4	81.3	0.9	5.2	1.1	1.5	0.3	0.2	0.1	90.7	0.9	8.4	0.084	0.523	19.120491	-104.377974
Santiago	13.80	3	2	8450	9.7	81.1	0.9	5.0	1.1	1.6	0.3	0.2	0.1	90.8	0.9	8.3	0.116	0.523	19.120409	-104.377984
T. Der. Libramiento de Manzanillo Norte	19.00	3	0	10207	8.6	75.6	2.1	9.2	2.1	1.1	0.7	0.5	0.1	84.2	2.1	13.7	0.071	0.502	19.135910	-104.428305
San Juan de Cuatro Vientos	35.65	3	0	7049	8.0	77.7	1.9	6.0	2.1	2.6	0.9	0.3	0.5	85.7	1.9	12.4	0.078	0.511	19.195128	-104.547436

COLIMA

9 CARR: Manzanillo - Puerto Vallarta

CLAVE: 00070

RUTA: MEX-200

AÑO: 2025

LUGAR	ESTACION				CLASIFICACION VEHICULAR EN PORCIENTO										COORDENADAS					
	KM	TE	SC	TDPA	M	A	B	C2	C3	T3S2	T3S3	T3S2R4	OTROS	A	B	C	K'	D	LATITUD	LONGITUD
T. Izq. Aeropuerto Manzanillo	37.35	3	0	8075	9.4	77.8	2.3	6.0	1.8	1.6	0.7	0.3	0.1	87.2	2.3	10.5	0.070	0.526	19.195511	-104.551458
Lim. Edos. Term. Col. Ppia. Jal.	43.44																			
Cihuatlán	44.70	1	0	9649	12.7	73.6	3.1	7.8	0.9	0.7	0.5	0.4	0.3	86.3	3.1	10.6	0.087	0.594	19.233963	-104.549930
Cihuatlán	44.70	3	0	11032	12.1	75.2	3.1	7.9	0.7	0.5	0.3	0.2	0.0	87.3	3.1	9.6	0.075	0.522	19.229191	-104.583041
T. Izq. San Francisco	50.97	3	0	9763	13.3	75.0	3.5	5.6	1.0	0.9	0.3	0.4	0.0	88.3	3.5	8.2	0.076	0.552	19.216927	-104.625842
T. C. Libramiento de Melaque	53.42																			
Melaque	61.00	1	0	19490	12.7	77.7	1.8	6.2	0.7	0.6	0.2	0.1	0.0	90.4	1.8	7.8	0.076	0.661	19.228684	-104.692262
Melaque	61.00	3	0	8633	12.6	78.0	1.9	5.4	0.9	0.7	0.4	0.1	0.0	90.6	1.9	7.5	0.082	0.552	19.239074	-104.711408
T. Izq. La Manzanilla	75.90	1	0	3732	12.2	75.2	3.6	6.0	1.0	0.8	0.8	0.4	0.0	87.4	3.6	9.0	0.081	0.571	19.291291	-104.773075
T. Izq. La Manzanilla	75.90	3	0	3459	11.0	76.4	3.1	5.4	1.0	1.2	1.1	0.8	0.0	87.4	3.1	9.5	0.083	0.516	19.296791	-104.781138
T. Izq. Boca de Iguanas	78.85	3	0	2637	9.7	78.2	2.9	5.0	1.2	1.4	1.0	0.6	0.0	87.9	2.9	9.2	0.086	0.527	19.321607	-104.813831
T. Izq. Tenacatita	89.60	3	0	3115	12.6	77.7	2.3	3.8	0.9	1.5	0.8	0.4	0.0	90.3	2.3	7.4	0.081	0.530	19.347201	-104.879841
T. Der. Villa Purificación	133.30	1	0	2989	17.9	72.5	2.4	2.9	1.3	1.1	1.4	0.5	0.0	90.4	2.4	7.2	0.085	0.573	19.585577	-105.091204
T. Der. Villa Purificación	133.30	3	0	3383	15.0	76.1	2.2	2.4	1.4	1.5	0.9	0.5	0.0	91.1	2.2	6.7	0.087	0.558	19.589333	-105.095357
T. Der. Tomatlán	177.50	1	0	2632	4.9	84.6	1.9	2.6	3.3	1.4	0.9	0.4	0.0	89.5	1.9	8.6	0.084	0.541	19.871173	-105.330705
T. Der. Tomatlán	177.50	3	0	3846	9.6	80.7	1.5	2.5	3.1	1.3	0.9	0.4	0.0	90.3	1.5	8.2	0.084	0.551	19.876821	-105.336276
T. Izq. El Tuito	231.71	3	0	4137	7.0	83.1	2.1	4.4	0.9	1.2	0.8	0.5	0.0	90.1	2.1	7.8	0.075	0.508	20.329795	-105.316679
Puerto Vallarta	275.84	1	0	11884	6.3	84.6	2.2	3.8	0.9	0.6	0.6	0.7	0.3	90.9	2.2	6.9	0.084	0.501	20.556210	-105.259201

10 CARR: Minatitlán - Ent. Pez Vela

CLAVE: 06015

RUTA: MEX-098

AÑO: 2025

LUGAR	ESTACION				CLASIFICACION VEHICULAR EN PORCIENTO										COORDENADAS					
	KM	TE	SC	TDPA	M	A	B	C2	C3	T3S2	T3S3	T3S2R4	OTROS	A	B	C	K'	D	LATITUD	LONGITUD
Minatitlán	0.00																			
T. Der. Jalipa	49.50	1	0	2640	18.2	74.9	0.9	4.6	0.7	0.5	0.1	0.1	0.0	93.1	0.9	6.0	0.117	0.505	19.137642	-104.265016
T. Der. Jalipa	49.50	3	1	7043	3.5	71.4	2.2	4.9	2.6	6.1	2.9	5.5	0.9	74.9	2.2	22.9	0.097	0.502	19.109927	-104.262330
T. Der. Jalipa	49.50	3	2	7105	3.7	71.3	2.0	4.7	2.8	6.0	3.2	5.4	0.9	75.0	2.0	23.0	0.078	0.502	19.109369	-104.262932
T. C. Manzanillo - Puerto Vallarta	58.50	1	1	9156	4.2	68.8	2.0	4.4	2.6	8.1	3.0	6.0	0.9	73.0	2.0	25.0	0.079	0.527	19.092250	-104.277188
T. C. Manzanillo - Puerto Vallarta	58.50	1	2	10186	4.4	68.0	2.2	4.6	2.8	8.2	3.1	5.8	0.9	72.4	2.2	25.4	0.071	0.527	19.092108	-104.277082

11 CARR: Paso por La Salada

CLAVE: 06121

RUTA: MEX-110

AÑO: 2025

LUGAR	ESTACION				CLASIFICACION VEHICULAR EN PORCIENTO										COORDENADAS					
	KM	TE	SC	TDPA	M	A	B	C2	C3	T3S2	T3S3	T3S2R4	OTROS	A	B	C	K'	D	LATITUD	LONGITUD
La Salada	4.80	3	0	81	3.0	86.3	3.0	6.9	0.8	0.0	0.0	0.0	0.0	89.3	3.0	7.7	0.230	0.534	19.047225	-103.787190

COLIMA

11 CARR: Paso por La Salada

CLAVE: 06121

RUTA: MEX-110

AÑO: 2025

LUGAR	ESTACION	CLASIFICACION VEHICULAR EN PORCIENTO														COORDENADAS					
		KM	TE	SC	TDPA	M	A	B	C2	C3	T3S2	T3S3	T3S2R4	OTROS	A	B	C	K'	D	LATITUD	LONGITUD
T. C. Ramal a Ixtlahuacán	8.00																				

12 CARR: Paso por Los Asmoles

CLAVE: 06120

RUTA: MEX-110

AÑO: 2025

LUGAR	ESTACION	CLASIFICACION VEHICULAR EN PORCIENTO														COORDENADAS					
		KM	TE	SC	TDPA	M	A	B	C2	C3	T3S2	T3S3	T3S2R4	OTROS	A	B	C	K'	D	LATITUD	LONGITUD
T. C. Colima - Ent. Tecmán	0.00																				
Los Asmoles	1.80	3	0	1977	3.4	88.5	0.8	4.3	0.7	1.2	0.5	0.4	0.2	91.9	0.8	7.3	0.088	0.507	19.122871	-103.772304	
T. C. Colima - Ent. Tecmán	2.90																				

13 CARR: Ramal a Cerro de Los Juanes

CLAVE: 06009

RUTA: MEX-098

AÑO: 2025

LUGAR	ESTACION	CLASIFICACION VEHICULAR EN PORCIENTO														COORDENADAS					
		KM	TE	SC	TDPA	M	A	B	C2	C3	T3S2	T3S3	T3S2R4	OTROS	A	B	C	K'	D	LATITUD	LONGITUD
T. C. Minatitlán - Ent. Pez Vela	0.00	3	0	1432	2.1	83.3	1.7	11.7	0.5	0.4	0.2	0.1	0.0	85.4	1.7	12.9	0.089	0.503	19.377789	-104.092358	
Cerro de Los Juanes	3.30																				

14 CARR: Ramal a Cerro de Ortega

CLAVE: 06009

RUTA: MEX-200

AÑO: 2025

LUGAR	ESTACION	CLASIFICACION VEHICULAR EN PORCIENTO														COORDENADAS					
		KM	TE	SC	TDPA	M	A	B	C2	C3	T3S2	T3S3	T3S2R4	OTROS	A	B	C	K'	D	LATITUD	LONGITUD
T. C. Ent. Playa Azul - Manzanillo	0.00	3	0	4267	33.7	53.3	1.8	7.7	1.1	0.8	0.5	0.8	0.3	87.0	1.8	11.2	0.089	0.505	18.754707	-103.722666	
Cerro de Ortega	1.00																				

15 CARR: Ramal a Cuyutlán

CLAVE: 06225

RUTA: MEX-200

AÑO: 2025

LUGAR	ESTACION	CLASIFICACION VEHICULAR EN PORCIENTO														COORDENADAS				
		KM	TE	SC	TDPA	M	A	B	C2	C3	T3S2	T3S3	T3S2R4	OTROS	A	B	C	K'	D	LATITUD
T. C. Ent. Playa Azul - Manzanillo	0.00	3	0	844	10.3	84.0	0.5	4.2	0.8	0.1	0.1	0.0	0.0	94.3	0.5	5.2	0.092	0.531	18.933203	-104.019858
Cuyutlán	7.00	1	0	772	5.2	89.8	0.3	4.4	0.3	0.0	0.0	0.0	0.0	95.0	0.3	4.7	0.148	0.531	18.911352	-104.054469

COLIMA

16 CARR: Tecomán - Boca de Pascuales

CLAVE: 06226

RUTA: MEX-200

AÑO: 2025

LUGAR	ESTACION				CLASIFICACION VEHICULAR EN PORCIENTO													COORDENADAS		
	KM	TE	SC	TDPA	M	A	B	C2	C3	T3S2	T3S3	T3S2R4	OTROS	A	B	C	K'	D	LATITUD	LONGITUD
Tecomán	0.00	3	0	2290	16.2	75.8	1.2	5.2	0.8	0.3	0.2	0.2	0.1	92.0	1.2	6.8	0.103	0.506	18.894969	-103.917074
Boca de Pascuales	12.00																			

17 CARR: Armería - Manzanillo (Cuota)

CLAVE: 06585

RUTA: MEX-200D

AÑO: 2025

LUGAR	ESTACION				CLASIFICACION VEHICULAR EN PORCIENTO													COORDENADAS		
	KM	TE	SC	TDPA	M	A	B	C2	C3	T3S2	T3S3	T3S2R4	OTROS	A	B	C	K'	D	LATITUD	LONGITUD
T. C. Ent. Playa Azul - Manzanillo	44.00	3	1	9997	5.4	73.5	2.5	3.9	1.4	5.4	1.9	5.1	0.9	78.9	2.5	18.6	0.084	0.519	18.934103	-103.945735
T. C. Ent. Playa Azul - Manzanillo	44.00	3	2	10802	5.4	74.4	2.3	3.8	1.5	5.2	1.7	4.9	0.8	79.8	2.3	17.9	0.088	0.519	18.933973	-103.945701
T. Izq. Playa Paraíso	47.63	3	1	9212	3.6	71.5	2.8	3.4	1.4	5.4	2.5	8.6	0.8	75.1	2.8	22.1	0.081	0.505	18.928276	-103.968921
T. Izq. Playa Paraíso	47.63	3	2	9017	3.7	71.4	3.1	3.3	1.4	5.5	2.4	8.5	0.7	75.1	3.1	21.8	0.090	0.505	18.928152	-103.968894
1er Acceso a Cuyutlán	59.67	3	1	7618	3.8	73.3	2.3	3.3	1.4	7.9	2.0	5.4	0.6	77.1	2.3	20.6	0.087	0.505	18.926523	-104.069678
1er Acceso a Cuyutlán	59.67	3	2	7461	3.7	72.9	2.5	3.5	1.6	7.6	2.2	5.5	0.5	76.6	2.5	20.9	0.077	0.505	18.926451	-104.069655
T. Izq. Cuyutlán	61.00	3	1	6559	4.2	69.7	3.4	4.0	1.4	7.0	2.4	7.2	0.7	73.9	3.4	22.7	0.094	0.517	18.931275	-104.087781
T. Izq. Cuyutlán	61.00	3	2	7012	4.5	69.3	3.5	4.1	1.3	6.9	2.5	7.3	0.6	73.8	3.5	22.7	0.093	0.517	18.931212	-104.087829
Plaza de Cobro Cuyutlán	62.00	2	1	6682	0.0	69.5	1.7	1.8	1.5	6.7	3.3	12.5	3.0	69.5	1.7	28.8	0.096	0.500	18.927852	-104.081512
Plaza de Cobro Cuyutlán	62.00	2	2	6682	0.0	69.5	1.7	1.8	1.5	6.7	3.3	12.5	3.0	69.5	1.7	28.8	0.096	0.500	18.927852	-104.081512
T. C. Ent. Playa Azul - Manzanillo	88.00	1	1	9553	3.0	76.8	2.3	3.2	2.8	4.7	2.1	4.2	0.9	79.8	2.3	17.9	0.070	0.511	19.049426	-104.265748
T. C. Ent. Playa Azul - Manzanillo	88.00	1	2	9124	3.1	76.1	2.4	3.4	2.9	4.9	2.0	4.3	0.9	79.2	2.4	18.4	0.087	0.511	19.049359	-104.265809
T. C. Ent. Playa Azul - Manzanillo	88.00	3	1	8584	7.3	70.5	3.7	3.3	2.8	5.3	1.8	4.4	0.9	77.8	3.7	18.5	0.071	0.505	19.056066	-104.269167
T. C. Ent. Playa Azul - Manzanillo	88.00	3	2	8405	7.1	70.2	3.5	3.5	2.8	5.5	2.0	4.5	0.9	77.3	3.5	19.2	0.085	0.505	19.056050	-104.269255
T. C. Libramiento de Manzanillo (Libre)	90.00																			

18 CARR: Guadalajara - Colima (Cuota)

CLAVE: 00118

RUTA: MEX-054D

AÑO: 2025

LUGAR	ESTACION				CLASIFICACION VEHICULAR EN PORCIENTO													COORDENADAS		
	KM	TE	SC	TDPA	M	A	B	C2	C3	T3S2	T3S3	T3S2R4	OTROS	A	B	C	K'	D	LATITUD	LONGITUD
T. C. Ent. Santa Cruz - Melaque	0.00																			
Plaza de Cobro Acatlán	7.70	1	1	7842	3.1	66.9	6.3	4.2	2.4	7.6	2.5	6.3	0.7	70.0	6.3	23.7	0.070	0.649	20.417683	-103.556626
Plaza de Cobro Acatlán	7.70	1	2	8183	3.2	66.5	5.8	4.6	2.6	7.8	2.7	6.1	0.7	69.7	5.8	24.5	0.093	0.649	20.418329	-103.556366
Plaza de Cobro Acatlán	7.70	2	1	8067	0.4	60.2	2.2	4.2	4.0	10.1	4.5	11.0	3.4	60.6	2.2	37.2	0.084	0.500	20.373443	-103.576317
Plaza de Cobro Acatlán	7.70	2	2	8067	0.4	60.2	2.2	4.2	4.0	10.1	4.5	11.0	3.4	60.6	2.2	37.2	0.084	0.500	20.373443	-103.576317
T. Izq. San Marcos	16.20	1	1	9462	2.6	67.0	5.5	4.6	2.3	8.0	3.4	5.9	0.7	69.6	5.5	24.9	0.076	0.548	20.343825	-103.573176
T. Izq. San Marcos	16.20	1	2	8792	2.8	67.0	5.2	4.2	2.5	8.3	3.1	6.2	0.7	69.8	5.2	25.0	0.075	0.548	20.343530	-103.572849
T. Izq. Teocuitatlán de Corona	36.12	3	1	8260	2.1	65.1	4.9	4.2	3.3	9.6	3.4	6.8	0.6	67.2	4.9	27.9	0.078	0.577	20.123178	-103.509176

COLIMA

18 CARR: Guadalajara - Colima (Cuota)

CLAVE: 00118

RUTA: MEX-054D

AÑO: 2025

LUGAR	ESTACION				CLASIFICACION VEHICULAR EN PORCIENTO													COORDENADAS		
	KM	TE	SC	TDPA	M	A	B	C2	C3	T3S2	T3S3	T3S2R4	OTROS	A	B	C	K'	D	LATITUD	LONGITUD
T. Izq. Teocuitatlán de Corona	36.12	3	2	8564	2.6	63.9	4.9	4.3	3.4	9.8	3.5	6.9	0.7	66.5	4.9	28.6	0.066	0.577	20.123801	-103.508653
T. Der. Usmajac	64.40	1	1	8847	2.7	67.5	4.1	3.9	3.4	8.8	2.9	6.2	0.5	70.2	4.1	25.7	0.068	0.647	19.883379	-103.517041
T. Der. Usmajac	64.40	1	2	9858	2.6	66.5	4.0	4.2	3.3	9.2	3.1	6.7	0.4	69.1	4.0	26.9	0.077	0.647	19.883388	-103.516957
T. Izq. Cd. Guzmán	86.70	1	1	9335	2.2	68.7	3.2	5.0	3.0	7.4	3.5	6.2	0.8	70.9	3.2	25.9	0.067	0.580	19.708160	-103.500952
T. Izq. Cd. Guzmán	86.70	1	2	9086	2.0	69.2	3.0	5.2	3.3	7.2	3.1	6.1	0.9	71.2	3.0	25.8	0.076	0.580	19.708198	-103.500855
T. Izq. Cd. Guzmán	86.70	3	1	9613	1.7	69.0	3.6	5.5	3.4	6.8	3.1	6.3	0.6	70.7	3.6	25.7	0.069	0.505	19.691621	-103.493918
T. Izq. Cd. Guzmán	86.70	3	2	9837	1.9	69.3	3.8	5.8	3.0	6.7	2.7	6.1	0.7	71.2	3.8	25.0	0.066	0.505	19.691657	-103.493834
T. Izq. Cd. Tuxpan	107.27	1	1	7902	2.3	75.4	1.4	4.5	2.1	7.2	3.7	2.9	0.5	77.7	1.4	20.9	0.070	0.575	19.550454	-103.442904
T. Izq. Cd. Tuxpan	107.27	1	2	7522	2.3	75.6	1.4	4.4	1.9	7.2	3.7	3.1	0.4	77.9	1.4	20.7	0.065	0.575	19.540562	-103.425589
Plaza de Cobro San Marcos	126.60	2	1	6778	0.5	53.6	2.1	4.2	4.4	12.6	5.6	12.7	4.3	54.1	2.1	43.8	0.084	0.500	19.433745	-103.494491
Plaza de Cobro San Marcos	126.60	2	2	6778	0.5	53.6	2.1	4.2	4.4	12.6	5.6	12.7	4.3	54.1	2.1	43.8	0.084	0.500	19.433745	-103.494491
Lim. Edos. Term. Jal. Ppia. Col.	129.50																			
X. C. Cuauhtémoc - Colima	140.70	1	1	10768	1.2	75.6	3.6	3.9	2.5	6.0	2.0	4.9	0.3	76.8	3.6	19.6	0.071	0.504	19.315068	-103.597691
X. C. Cuauhtémoc - Colima	140.70	1	2	10594	1.0	75.4	3.7	4.0	2.6	6.1	2.1	4.8	0.3	76.4	3.7	19.9	0.091	0.504	19.314917	-103.597608
X. C. Cuauhtémoc - Colima	140.70	3	1	12556	1.9	75.1	3.1	4.5	2.0	6.2	1.8	4.8	0.6	77.0	3.1	19.9	0.084	0.505	19.308017	-103.610676
X. C. Cuauhtémoc - Colima	140.70	3	2	12791	1.9	74.5	3.1	4.6	2.1	6.0	1.9	5.2	0.7	76.4	3.1	20.5	0.100	0.505	19.307878	-103.610601
T. C. Colima - Cd. Guzmán	146.10																			

19 CARR: Armería - Playa El Paraíso

CLAVE: 06580

RUTA: COL

AÑO: 2025

LUGAR	ESTACION				CLASIFICACION VEHICULAR EN PORCIENTO													COORDENADAS		
	KM	TE	SC	TDPA	M	A	B	C2	C3	T3S2	T3S3	T3S2R4	OTROS	A	B	C	K'	D	LATITUD	LONGITUD
T. C. Ent. Playa Azul - Manzanillo	0.00	3	0	2795	12.0	80.1	0.5	6.4	0.7	0.2	0.1	0.0	0.0	92.1	0.5	7.4	0.145	0.527	18.924781	-103.963960
Playa Paraíso	7.50	1	0	1405	12.6	82.1	0.5	4.5	0.3	0.0	0.0	0.0	0.0	94.7	0.5	4.8	0.195	0.514	18.877797	-103.989997

20 CARR: Colima - Comala

CLAVE: 06016

RUTA: COL-016

AÑO: 2025

LUGAR	ESTACION				CLASIFICACION VEHICULAR EN PORCIENTO													COORDENADAS		
	KM	TE	SC	TDPA	M	A	B	C2	C3	T3S2	T3S3	T3S2R4	OTROS	A	B	C	K'	D	LATITUD	LONGITUD
Colima	0.00																			
Villa Álvarez	3.00	3	1	17570	8.7	86.0	0.6	2.3	0.5	0.7	0.4	0.2	0.6	94.7	0.6	4.7	0.083	0.515	19.287161	-103.746062
Villa Álvarez	3.00	3	2	18675	8.8	85.7	0.8	2.0	0.6	0.8	0.7	0.2	0.4	94.5	0.8	4.7	0.071	0.515	19.287273	-103.746230
Comala	10.00																			

COLIMA

21 CARR: Colima - Coquimatlán

CLAVE: 06034

RUTA: COL-034

AÑO: 2025

LUGAR	ESTACION				CLASIFICACION VEHICULAR EN PORCIENTO										COORDENADAS					
	KM	TE	SC	TDPA	M	A	B	C2	C3	T3S2	T3S3	T3S2R4	OTROS	A	B	C	K'	D	LATITUD	LONGITUD
Colima	0.00																			
T. Der. Villa Álvarez	3.00	3	1	12197	6.4	87.1	0.7	5.2	0.4	0.1	0.0	0.1	0.0	93.5	0.7	5.8	0.075	0.505	19.241650	-103.754526
T. Der. Villa Álvarez	3.00	3	2	12442	6.5	86.9	0.7	5.2	0.5	0.1	0.0	0.1	0.0	93.4	0.7	5.9	0.071	0.505	19.241522	-103.754609
Coquimatlán	11.00	1	1	6975	4.8	90.0	0.8	3.7	0.5	0.1	0.1	0.0	0.0	94.8	0.8	4.4	0.091	0.519	19.217233	-103.802521
Coquimatlán	11.00	1	2	7525	5.0	89.6	0.9	3.9	0.3	0.1	0.1	0.0	0.1	94.6	0.9	4.5	0.082	0.519	19.217175	-103.802445

22 CARR: Comala - San Antonio

CLAVE: 06030

RUTA: COL-016

AÑO: 2025

LUGAR	ESTACION				CLASIFICACION VEHICULAR EN PORCIENTO										COORDENADAS					
	KM	TE	SC	TDPA	M	A	B	C2	C3	T3S2	T3S3	T3S2R4	OTROS	A	B	C	K'	D	LATITUD	LONGITUD
Comala	0.00	3	1	1745	0.4	92.7	0.5	6.2	0.0	0.0	0.0	0.0	0.2	93.1	0.5	6.4	0.088	0.515	19.335928	-103.746499
Comala	0.00	3	2	1641	0.3	92.4	0.4	6.6	0.0	0.0	0.0	0.0	0.3	92.7	0.4	6.9	0.099	0.515	19.335815	-103.746558
Suchitlán	10.00	1	0	5986	6.9	86.8	0.8	4.7	0.3	0.2	0.3	0.0	0.0	93.7	0.8	5.5	0.094	0.513	19.368924	-103.722381
San Antonio	20.50																			

23 CARR: Coquimatlán - Pueblo Juárez

CLAVE: 06029

RUTA: COL-034

AÑO: 2025

LUGAR	ESTACION				CLASIFICACION VEHICULAR EN PORCIENTO										COORDENADAS					
	KM	TE	SC	TDPA	M	A	B	C2	C3	T3S2	T3S3	T3S2R4	OTROS	A	B	C	K'	D	LATITUD	LONGITUD
Coquimatlán	0.00	3	0	3252	11.8	81.1	1.3	4.6	0.7	0.2	0.1	0.1	0.1	92.9	1.3	5.8	0.070	0.505	19.198532	-103.815912
Pueblo Juárez	16.00																			

24 CARR: Costera Laguna de Cuyutlán

CLAVE: 06010

RUTA: COL

AÑO: 2025

LUGAR	ESTACION				CLASIFICACION VEHICULAR EN PORCIENTO										COORDENADAS					
	KM	TE	SC	TDPA	M	A	B	C2	C3	T3S2	T3S3	T3S2R4	OTROS	A	B	C	K'	D	LATITUD	LONGITUD
T. C. Armería - Manzanillo (Cuota)	0.00	3	0	636	13.7	60.1	2.0	17.2	2.0	1.9	0.8	2.0	0.3	73.8	2.0	24.2	0.191	0.524	19.019934	-104.307029
Manzanillo	13.00	1	0	3472	17.0	71.8	0.8	9.8	0.4	0.1	0.1	0.0	0.0	88.8	0.8	10.4	0.094	0.513	19.034750	-104.329765

25 CARR: Cuauhtémoc - Colima

CLAVE: 06019

RUTA: COL-019

AÑO: 2025

LUGAR	ESTACION				CLASIFICACION VEHICULAR EN PORCIENTO										COORDENADAS					
	KM	TE	SC	TDPA	M	A	B	C2	C3	T3S2	T3S3	T3S2R4	OTROS	A	B	C	K'	D	LATITUD	LONGITUD
Cuauhtémoc	0.00	3	0	7492	4.0	90.6	0.9	2.1	0.7	0.8	0.3	0.4	0.2	94.6	0.9	4.5	0.077	0.520	19.316743	-103.603453
X. C. Libramiento de Colima	19.50	1	1	14849	9.5	83.0	0.5	5.5	0.3	0.5	0.3	0.2	0.2	92.5	0.5	7.0	0.100	0.519	19.236363	-103.701046

COLIMA

25 CARR: Cuauhtémoc - Colima CLAVE: 06019 RUTA: COL-019 AÑO: 2025

LUGAR	ESTACION				CLASIFICACION VEHICULAR EN PORCIENTO													COORDENADAS		
	KM	TE	SC	TDPA	M	A	B	C2	C3	T3S2	T3S3	T3S2R4	OTROS	A	B	C	K'	D	LATITUD	LONGITUD
X. C. Libramiento de Colima	19.50	1	2	13767	9.6	82.5	0.4	5.6	0.4	0.6	0.4	0.3	0.2	92.1	0.4	7.5	0.083	0.519	19.236152	-103.700868
Colima	22.40																			

26 CARR: Libramiento de Comala CLAVE: RUTA: COL-016 AÑO: 2025

LUGAR	ESTACION				CLASIFICACION VEHICULAR EN PORCIENTO													COORDENADAS		
	KM	TE	SC	TDPA	M	A	B	C2	C3	T3S2	T3S3	T3S2R4	OTROS	A	B	C	K'	D	LATITUD	LONGITUD
T. C. Colima - Comala	0.00	3	0	5855	5.8	85.3	0.5	3.8	0.7	2.3	0.6	0.3	0.7	91.1	0.5	8.4	0.084	0.503	19.294411	-103.746892
T. C. Comala - San Antonio	7.10	1	0	3754	6.0	86.9	0.5	3.9	0.5	1.6	0.3	0.1	0.2	92.9	0.5	6.6	0.092	0.518	19.342951	-103.740512

27 CARR: Libramiento de Tecmán CLAVE: 06122 RUTA: COL AÑO: 2025

LUGAR	ESTACION				CLASIFICACION VEHICULAR EN PORCIENTO													COORDENADAS		
	KM	TE	SC	TDPA	M	A	B	C2	C3	T3S2	T3S3	T3S2R4	OTROS	A	B	C	K'	D	LATITUD	LONGITUD
T. C. Ent. Playa Azul - Manzanillo (Sur)	0.00	3	1	3049	10.7	62.8	2.6	16.0	2.3	2.6	2.1	0.7	0.2	73.5	2.6	23.9	0.116	0.516	18.899240	-103.858533
T. C. Ent. Playa Azul - Manzanillo (Sur)	0.00	3	2	2856	10.7	63.0	2.4	16.1	2.1	2.5	2.1	0.7	0.4	73.7	2.4	23.9	0.124	0.516	18.899285	-103.858650
T. C. Ent. Playa Azul - Manzanillo (Norte)	7.90	1	1	3956	7.9	73.2	1.1	5.8	3.2	4.1	3.8	0.5	0.4	81.1	1.1	17.8	0.074	0.548	18.942497	-103.890296
T. C. Ent. Playa Azul - Manzanillo (Norte)	7.90	1	2	3265	7.9	73.0	1.2	5.6	3.3	4.2	3.9	0.6	0.3	80.9	1.2	17.9	0.087	0.548	18.942410	-103.890201

28 CARR: Libramiento Poniente Arco Sur de Tecmán CLAVE: RUTA: COL AÑO: 2025

LUGAR	ESTACION				CLASIFICACION VEHICULAR EN PORCIENTO													COORDENADAS		
	KM	TE	SC	TDPA	M	A	B	C2	C3	T3S2	T3S3	T3S2R4	OTROS	A	B	C	K'	D	LATITUD	LONGITUD
Ent. C. Playa Azul - Manzanillo	0.00	3	0	4881	8.4	77.4	1.2	7.0	1.8	2.4	1.3	0.3	0.2	85.8	1.2	13.0	0.084	0.508	18.939771	-103.896811
X. C. Tecmán - Boca de Pascuales	4.60	3	0	3279	8.5	69.7	2.0	8.4	3.3	5.2	2.0	0.6	0.3	78.2	2.0	19.8	0.101	0.508	18.900904	-103.905233
X. C. Tecmán - La Mascota	6.90	3	0	3295	9.2	67.7	2.5	10.4	2.9	4.4	1.9	0.6	0.4	76.9	2.5	20.6	0.091	0.524	18.888834	-103.888026
Ent. C. Playa Azul - Manzanillo	11.17																			

29 CARR: Libramiento Poniente de Colima CLAVE: 06122 RUTA: COL AÑO: 2025

LUGAR	ESTACION				CLASIFICACION VEHICULAR EN PORCIENTO													COORDENADAS		
	KM	TE	SC	TDPA	M	A	B	C2	C3	T3S2	T3S3	T3S2R4	OTROS	A	B	C	K'	D	LATITUD	LONGITUD
T. C. Colima - Ent. Tecmán	4.00	3	1	12497	5.3	86.1	1.0	5.0	1.3	0.8	0.2	0.2	0.1	91.4	1.0	7.6	0.074	0.504	19.222149	-103.753320
T. C. Colima - Ent. Tecmán	4.00	3	2	12712	5.3	86.3	1.0	5.1	1.3	0.6	0.2	0.1	0.1	91.6	1.0	7.4	0.123	0.504	19.222052	-103.753389
T. C. Colima - Coquimatlán	10.00																			

COLIMA

30 CARR: Los Limones - Loma de Juárez

CLAVE: 06122

RUTA: COL

AÑO: 2025

LUGAR	ESTACION				CLASIFICACION VEHICULAR EN PORCIENTO													COORDENADAS		
	KM	TE	SC	TDPA	M	A	B	C2	C3	T3S2	T3S3	T3S2R4	OTROS	A	B	C	K'	D	LATITUD	LONGITUD
Los Limones	0.00																			
T. C. Colima - Ent. Tecomán	5.77	1	0	1873	3.7	78.1	2.2	12.6	0.8	2.2	0.3	0.1	0.0	81.8	2.2	16.0	0.080	0.523	19.194575	-103.755375

31 CARR: Puerta de Caleras - Madrid

CLAVE: 06014

RUTA: COL-014

AÑO: 2025

LUGAR	ESTACION				CLASIFICACION VEHICULAR EN PORCIENTO													COORDENADAS		
	KM	TE	SC	TDPA	M	A	B	C2	C3	T3S2	T3S3	T3S2R4	OTROS	A	B	C	K'	D	LATITUD	LONGITUD
T. C. Colima - Ent. Tecomán	0.00	3	0	3189	12.6	67.9	2.1	7.7	3.2	3.0	2.7	0.5	0.3	80.5	2.1	17.4	0.078	0.512	18.979442	-103.862439
Madrid	14.00																			

32 CARR: Ramal a Aeropuerto de Colima

CLAVE: 06224

RUTA: COL

AÑO: 2025

LUGAR	ESTACION				CLASIFICACION VEHICULAR EN PORCIENTO													COORDENADAS		
	KM	TE	SC	TDPA	M	A	B	C2	C3	T3S2	T3S3	T3S2R4	OTROS	A	B	C	K'	D	LATITUD	LONGITUD
T. C. Cuauhtémoc - Colima	0.00	3	0	1565	1.2	91.2	0.7	6.0	0.6	0.0	0.0	0.2	0.1	92.4	0.7	6.9	0.090	0.516	19.289186	-103.593318
Aeropuerto de Colima	1.00																			

33 CARR: Ramal a Aeropuerto Manzanillo

CLAVE: 06582

RUTA: COL

AÑO: 2025

LUGAR	ESTACION				CLASIFICACION VEHICULAR EN PORCIENTO													COORDENADAS		
	KM	TE	SC	TDPA	M	A	B	C2	C3	T3S2	T3S3	T3S2R4	OTROS	A	B	C	K'	D	LATITUD	LONGITUD
T. C. Manzanillo - Puerto Vallarta	0.00	3	0	1055	8.9	81.6	0.2	7.7	1.0	0.3	0.2	0.1	0.0	90.5	0.2	9.3	0.092	0.505	19.187499	-104.550879
Aeropuerto Manzanillo	5.50	1	0	1135	7.8	83.8	0.3	6.9	0.6	0.3	0.1	0.2	0.0	91.6	0.3	8.1	0.146	0.505	19.153188	-104.559714

34 CARR: Ramal a Camotlán de Miraflores

CLAVE: 06009

RUTA: COL

AÑO: 2025

LUGAR	ESTACION				CLASIFICACION VEHICULAR EN PORCIENTO													COORDENADAS		
	KM	TE	SC	TDPA	M	A	B	C2	C3	T3S2	T3S3	T3S2R4	OTROS	A	B	C	K'	D	LATITUD	LONGITUD
T. C. Minatitlán - Ent. Pez Vela	0.00	3	0	2705	19.6	68.6	0.5	10.3	0.5	0.3	0.1	0.1	0.0	88.2	0.5	11.3	0.097	0.511	19.217251	-104.233292
Camotlán de Miraflores	1.00																			

COLIMA

35 CARR: Ramal a Ixtlahuacán

CLAVE: 06577

RUTA: COL-005

AÑO: 2025

LUGAR	ESTACION				CLASIFICACION VEHICULAR EN PORCIENTO														COORDENADAS	
	KM	TE	SC	TDPA	M	A	B	C2	C3	T3S2	T3S3	T3S2R4	OTROS	A	B	C	K'	D	LATITUD	LONGITUD
T. C. Colima - Ent. Tecomán Ixtlahuacán	0.00	3	0	740	3.9	79.6	1.0	8.6	3.0	1.1	2.6	0.2	0.0	83.5	1.0	15.5	0.103	0.516	19.025924	-103.791212
	8.50																			

36 CARR: Ramal a Las Brisas

CLAVE: 06571

RUTA: COL

AÑO: 2025

LUGAR	ESTACION				CLASIFICACION VEHICULAR EN PORCIENTO														COORDENADAS	
	KM	TE	SC	TDPA	M	A	B	C2	C3	T3S2	T3S3	T3S2R4	OTROS	A	B	C	K'	D	LATITUD	LONGITUD
T. C. Manzanillo - Puerto Vallarta (Central)	0.00	3	0	7049	11.9	84.5	0.9	2.1	0.3	0.1	0.1	0.1	0.0	96.4	0.9	2.7	0.114	0.512	19.075474	-104.304082
T. C. Manzanillo - Puerto Vallarta (Lateral)	0.00	3	1	6872	8.4	85.2	0.1	5.6	0.1	0.5	0.1	0.0	0.0	93.6	0.1	6.3	0.082	0.509	19.075453	-104.304175
T. C. Manzanillo - Puerto Vallarta (Lateral)	0.00	3	2	6628	8.3	85.1	0.1	5.8	0.1	0.5	0.1	0.0	0.0	93.4	0.1	6.5	0.082	0.509	19.075471	-104.303979
Las Brisas	2.30																			

37 CARR: Ramal a Los Tepames

CLAVE: 06004

RUTA: COL-004

AÑO: 2025

LUGAR	ESTACION				CLASIFICACION VEHICULAR EN PORCIENTO														COORDENADAS	
	KM	TE	SC	TDPA	M	A	B	C2	C3	T3S2	T3S3	T3S2R4	OTROS	A	B	C	K'	D	LATITUD	LONGITUD
T. C. Jiquilpan - Colima Los Tepames	0.00	3	0	1612	3.8	84.1	0.8	10.7	0.2	0.2	0.1	0.1	0.0	87.9	0.8	11.3	0.088	0.508	19.171972	-103.659453
	9.50																			

38 CARR: Ramal a Rancho Valle Nuevo

CLAVE: 06583

RUTA: COL

AÑO: 2025

LUGAR	ESTACION				CLASIFICACION VEHICULAR EN PORCIENTO														COORDENADAS	
	KM	TE	SC	TDPA	M	A	B	C2	C3	T3S2	T3S3	T3S2R4	OTROS	A	B	C	K'	D	LATITUD	LONGITUD
T. C. Ent. Playa Azul - Manzanillo Rancho Valle Nuevo	0.00	3	0	670	8.0	74.7	1.0	13.3	1.7	1.1	0.1	0.1	0.0	82.7	1.0	16.3	0.122	0.533	18.817921	-103.808834
	4.00																			

39 CARR: Ramal a Rincón de López

CLAVE: 06578

RUTA: COL

AÑO: 2025

LUGAR	ESTACION				CLASIFICACION VEHICULAR EN PORCIENTO														COORDENADAS	
	KM	TE	SC	TDPA	M	A	B	C2	C3	T3S2	T3S3	T3S2R4	OTROS	A	B	C	K'	D	LATITUD	LONGITUD
T. C. Ent. Playa Azul - Manzanillo Rincón de López	0.00	3	0	5785	17.5	75.6	0.7	4.8	0.8	0.3	0.1	0.2	0.0	93.1	0.7	6.2	0.075	0.508	18.951895	-103.947449
	14.00																			

COLIMA

40 CARR: Ramal a Tecuanillo

CLAVE: 06009

RUTA: COL-009

AÑO: 2025

LUGAR	ESTACION				CLASIFICACION VEHICULAR EN PORCIENTO														COORDENADAS	
	KM	TE	SC	TDPA	M	A	B	C2	C3	T3S2	T3S3	T3S2R4	OTROS	A	B	C	K'	D	LATITUD	LONGITUD
T. C. Ent. Playa Azul - Manzanillo	0.00	3	0	1574	10.4	69.8	2.4	12.7	0.8	2.9	0.6	0.2	0.2	80.2	2.4	17.4	0.100	0.539	18.890121	-103.855475
Tecuanillo	10.00																			

41 CARR: T. C. (Guadalajara - Colima Cuota) - Quesería

CLAVE: 06001

RUTA: COL-001

AÑO: 2025

LUGAR	ESTACION				CLASIFICACION VEHICULAR EN PORCIENTO														COORDENADAS	
	KM	TE	SC	TDPA	M	A	B	C2	C3	T3S2	T3S3	T3S2R4	OTROS	A	B	C	K'	D	LATITUD	LONGITUD
El Naranjal	20.12	3	0	1046	14.6	72.8	1.8	5.2	3.7	1.8	0.0	0.1	0.0	87.4	1.8	10.8	0.110	0.520	19.412096	-103.651798
Quesería	30.00	1	0	1760	5.5	66.1	1.7	11.8	13.6	0.6	0.4	0.2	0.1	71.6	1.7	26.7	0.119	0.519	19.392066	-103.590313

42 CARR: Tecomán - La Mascota

CLAVE: 06572

RUTA: COL

AÑO: 2025

LUGAR	ESTACION				CLASIFICACION VEHICULAR EN PORCIENTO														COORDENADAS	
	KM	TE	SC	TDPA	M	A	B	C2	C3	T3S2	T3S3	T3S2R4	OTROS	A	B	C	K'	D	LATITUD	LONGITUD
Tecomán	0.00	3	0	3635	10.2	77.4	1.5	5.8	1.8	2.6	0.3	0.2	0.2	87.6	1.5	10.9	0.098	0.511	18.895308	-103.888033
X. Libramiento Poniente Arco Sur de Tecomán	2.70	3	0	1671	15.2	71.0	1.8	9.3	0.7	1.6	0.2	0.1	0.1	86.2	1.8	12.0	0.105	0.518	18.888927	-103.892175
La Mascota	11.00																			

43 CARR: Trapichillos - Estación Alzada

CLAVE: 06003

RUTA: COL-003

AÑO: 2025

LUGAR	ESTACION				CLASIFICACION VEHICULAR EN PORCIENTO														COORDENADAS	
	KM	TE	SC	TDPA	M	A	B	C2	C3	T3S2	T3S3	T3S2R4	OTROS	A	B	C	K'	D	LATITUD	LONGITUD
T. C. Jiquilpan - Colima	0.00	3	0	353	4.1	71.8	2.5	8.0	7.5	3.6	1.9	0.2	0.4	75.9	2.5	21.6	0.097	0.550	19.173798	-103.526732
Estación Alzada	12.50	1	0	640	12.1	63.2	2.1	15.0	2.4	2.7	1.8	0.3	0.4	75.3	2.1	22.6	0.122	0.528	19.251518	-103.531223

44 CARR: Villa de Álvarez - Minatitlán

CLAVE: 06040

RUTA: COL

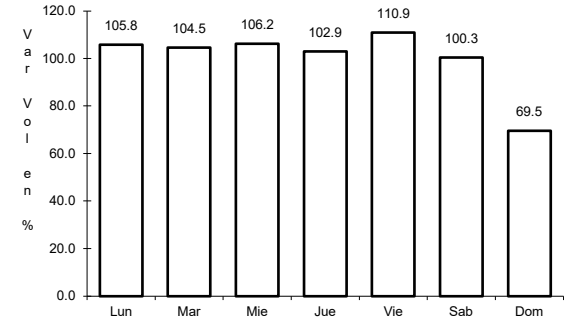
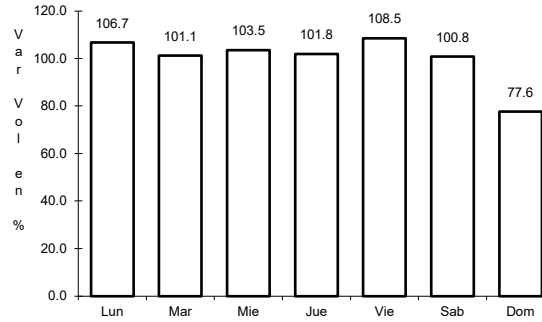
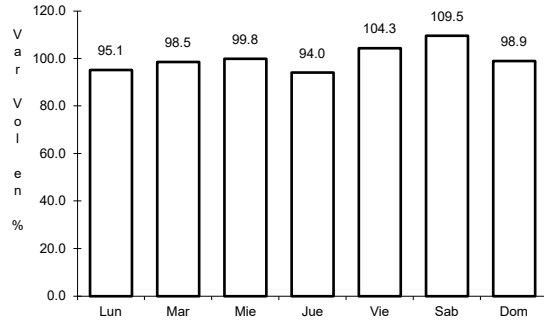
AÑO: 2025

LUGAR	ESTACION				CLASIFICACION VEHICULAR EN PORCIENTO														COORDENADAS	
	KM	TE	SC	TDPA	M	A	B	C2	C3	T3S2	T3S3	T3S2R4	OTROS	A	B	C	K'	D	LATITUD	LONGITUD
T. C. Colima - Comala	0.00	3	0	8504	12.1	79.1	1.2	3.9	1.5	1.0	0.6	0.4	0.2	91.2	1.2	7.6	0.076	0.516	19.283479	-103.779114
T. C. Minatitlán - Ent. Pez Vela	55.00																			

1 CARR: Colima - Cd. Guzmán

CLAVE: 00117

ruta: MEX-054



Km: 23.21

Tipo: 3

Sent: 0

Km: 82.20

Tipo: 1

Sent: 1

Km: 82.20

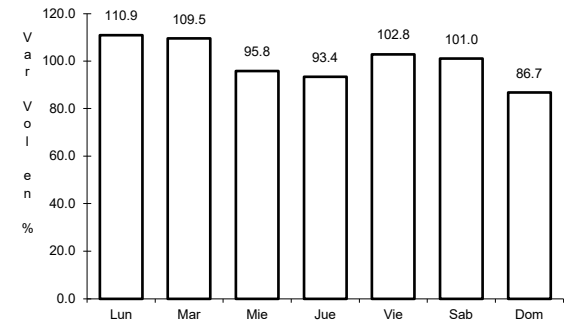
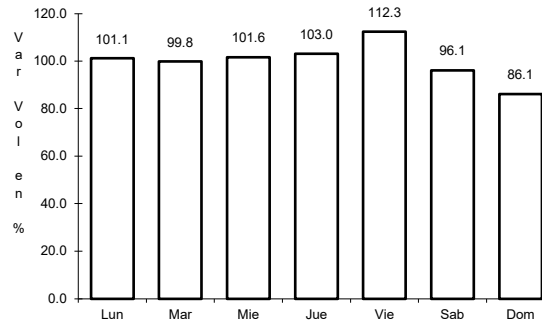
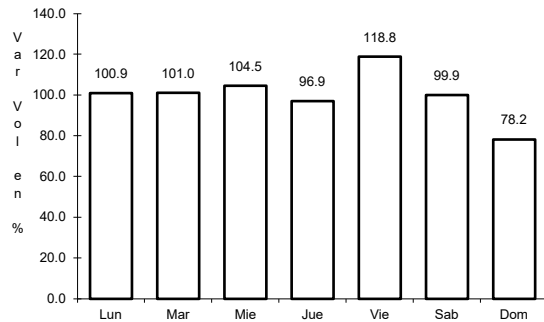
Tipo: 1

Sent: 2

2 CARR: Colima - Ent. Tecomán

CLAVE: 06119

ruta: MEX-110



Km: 0.00

Tipo: 3

Sent: 1

Km: 0.00

Tipo: 3

Sent: 2

Km: 40.10

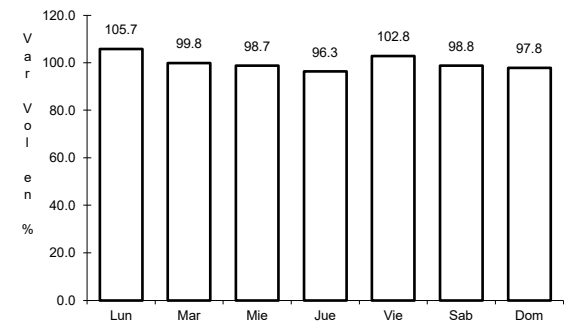
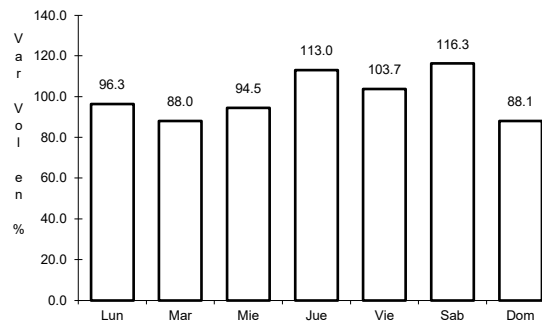
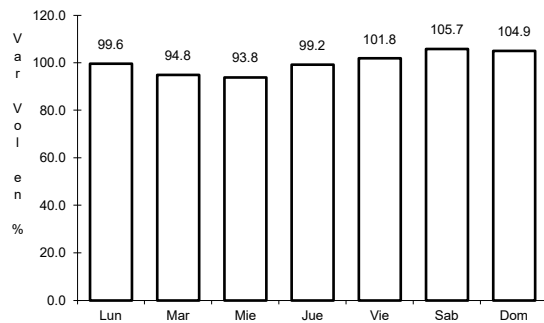
Tipo: 1

Sent: 1

3 CARR: Ent. Playa Azul - Manzanillo

CLAVE: 00495

ruta: MEX-200



Km: 0.00

Tipo: 3

Sent: 0

Km: 201.10

Tipo: 3

Sent: 0

Km: 321.12

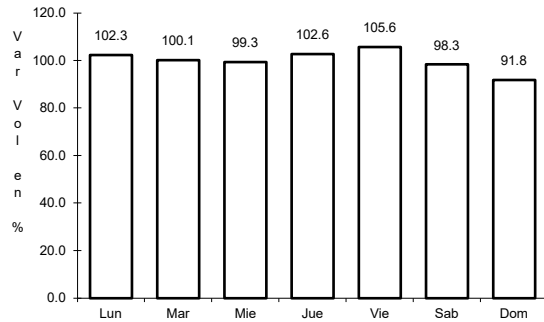
Tipo: 1

Sent: 0

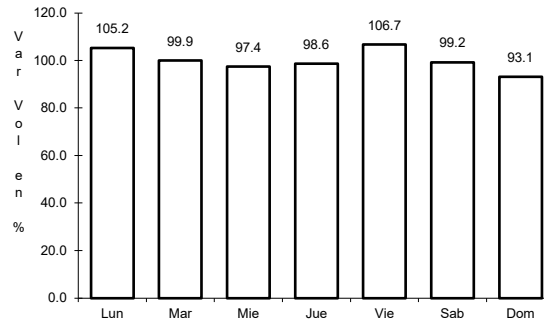
4 CARR: Jiquilpan - Colima

CLAVE: 00156

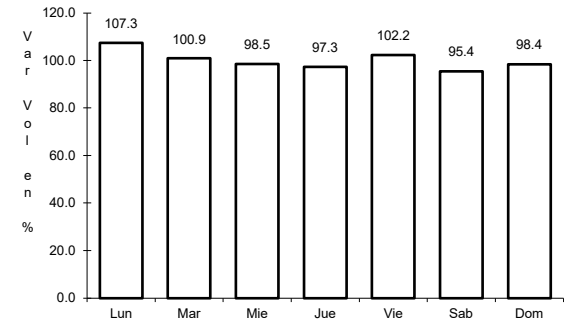
ruta: MEX-110



Km: 0.00 Tipo: 3 Sent: 0



Km: 108.50 Tipo: 1 Sent: 0

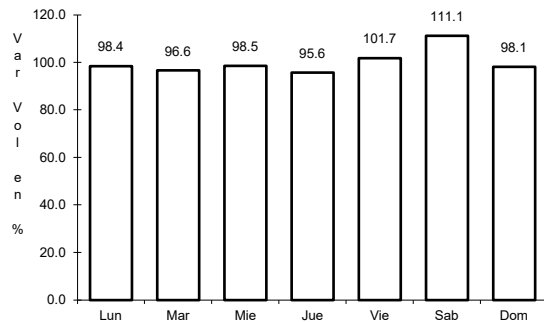


Km: 220.00 Tipo: 1 Sent: 0

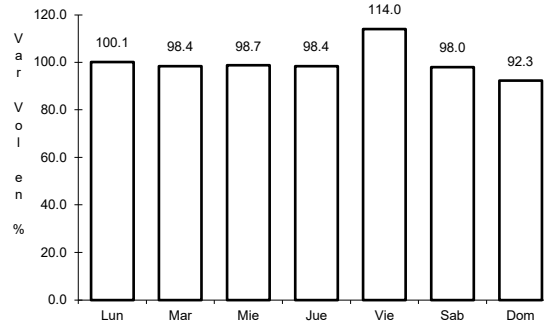
5 CARR: Libramiento Campos - Alameda

CLAVE:

ruta: MEX-200



Km: 0.00 Tipo: 3 Sent: 0

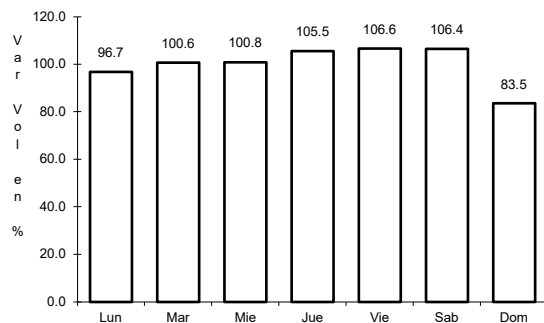


Km: 5.00 Tipo: 1 Sent: 0

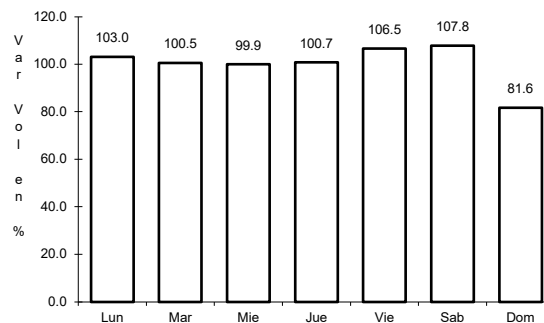
6 CARR: Libramiento de Colima

CLAVE: 06573

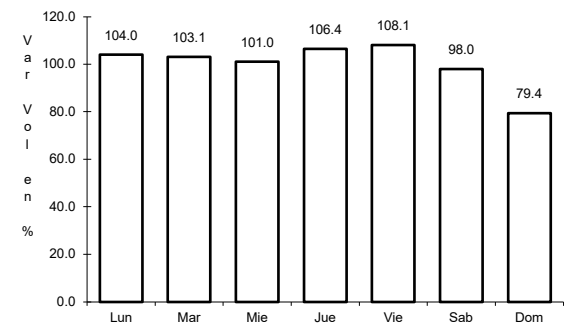
ruta: MEX-054



Km: 0.00 Tipo: 3 Sent: 1



Km: 0.00 Tipo: 3 Sent: 2

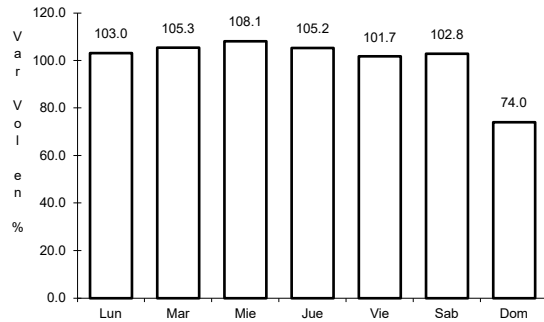


Km: 9.00 Tipo: 1 Sent: 1

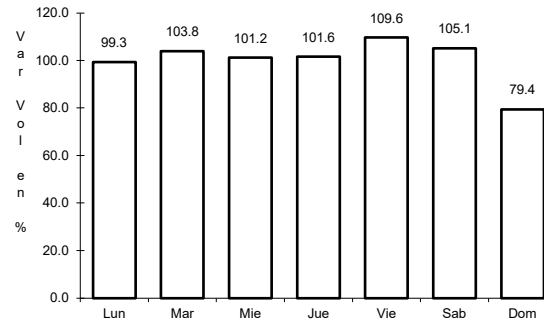
7 CARR: Libramiento de Manzanillo (Libre)

CLAVE: 06574

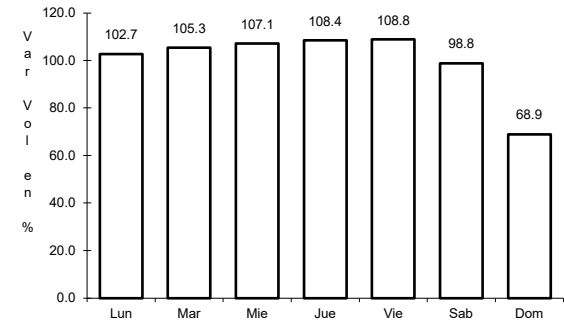
RUTA: MEX-200



Km: 0.00 Tipo: 3 Sent: 0



Km: 6.30 Tipo: 1 Sent: 1

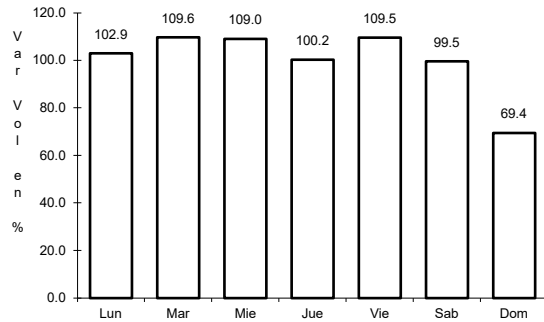


Km: 6.30 Tipo: 1 Sent: 2

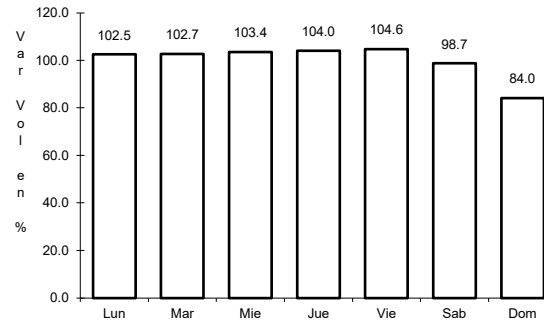
8 CARR: Libramiento de Manzanillo Norte

CLAVE: 06122

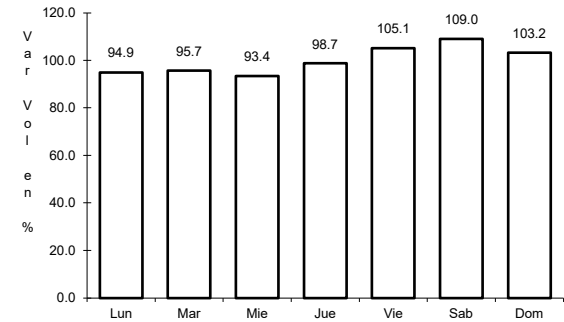
RUTA: MEX-200



Km: 0.00 Tipo: 3 Sent: 0



Km: 6.60 Tipo: 3 Sent: 0

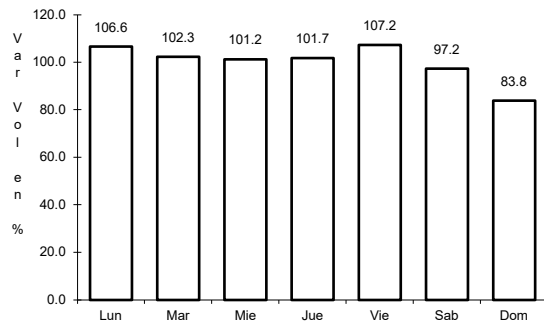


Km: 19.00 Tipo: 1 Sent: 0

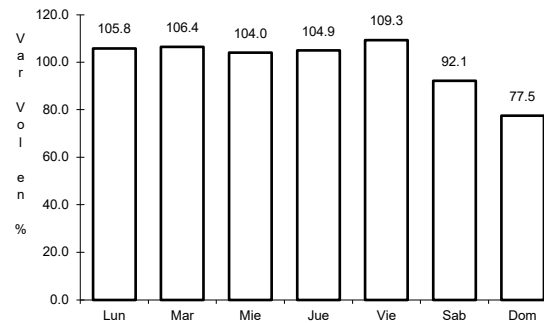
9 CARR: Manzanillo - Puerto Vallarta

CLAVE: 00070

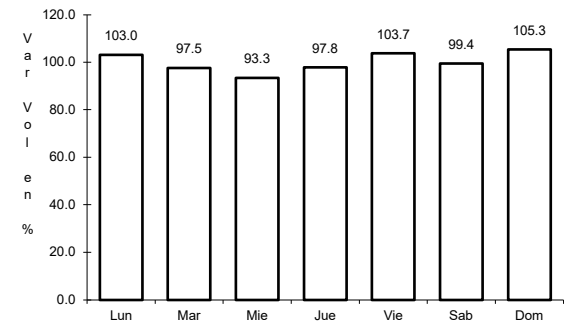
RUTA: MEX-200



Km: 0.00 Tipo: 3 Sent: 1



Km: 0.00 Tipo: 3 Sent: 2

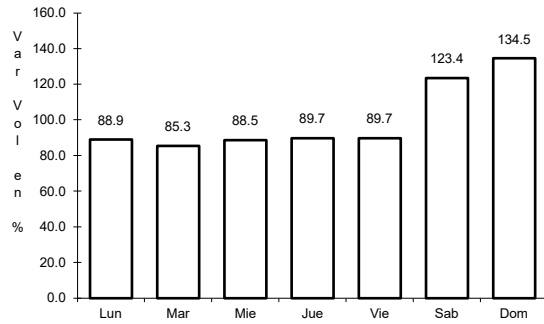


Km: 275.84 Tipo: 1 Sent: 0

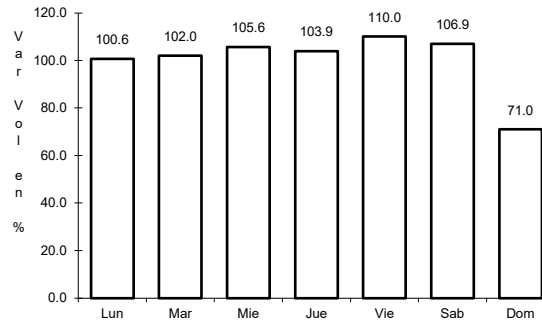
10 CARR: Minatitlán - Ent. Pez Vela

CLAVE: 06015

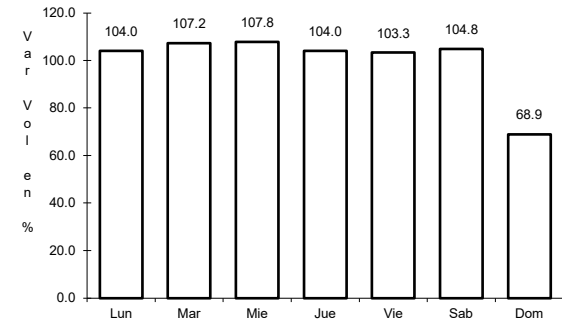
ruta: MEX-098



Km: 49.50 Tipo: 1 Sent: 0



Km: 58.50 Tipo: 1 Sent: 1

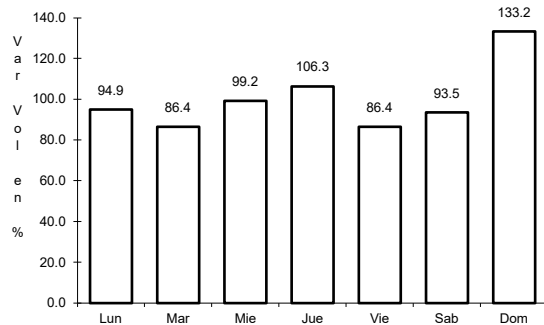


Km: 58.50 Tipo: 1 Sent: 2

11 CARR: Paso por La Salada

CLAVE: 06121

ruta: MEX-110

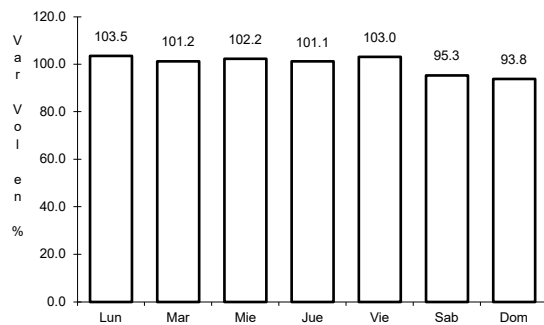


Km: 4.80 Tipo: 3 Sent: 0

12 CARR: Paso por Los Asmoles

CLAVE: 06120

ruta: MEX-110

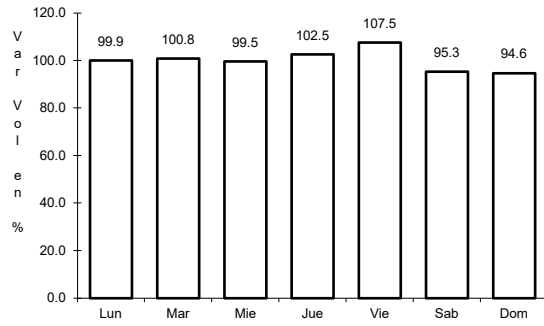


Km: 1.80 Tipo: 3 Sent: 0

13 CARR: Ramal a Cerro de Los Juanes

CLAVE: 06009

ruta: MEX-098



Km: 0.00

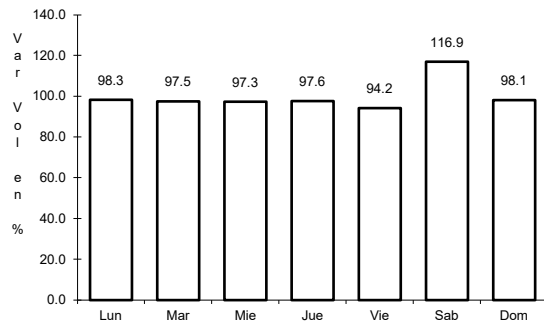
Tipo: 3

Sent: 0

14 CARR: Ramal a Cerro de Ortega

CLAVE: 06009

ruta: MEX-200



Km: 0.00

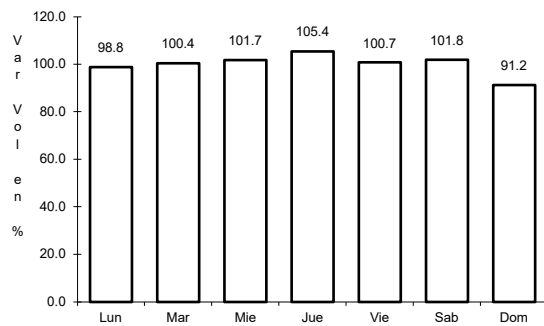
Tipo: 3

Sent: 0

15 CARR: Ramal a Cuyutlán

CLAVE: 06225

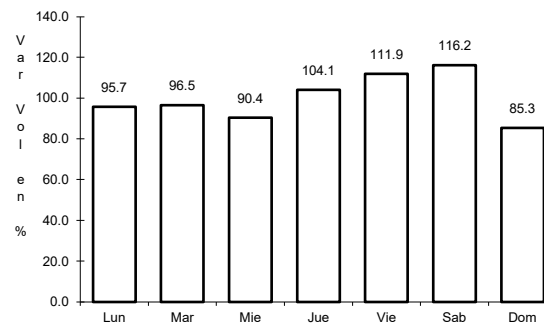
ruta: MEX-200



Km: 0.00

Tipo: 3

Sent: 0



Km: 7.00

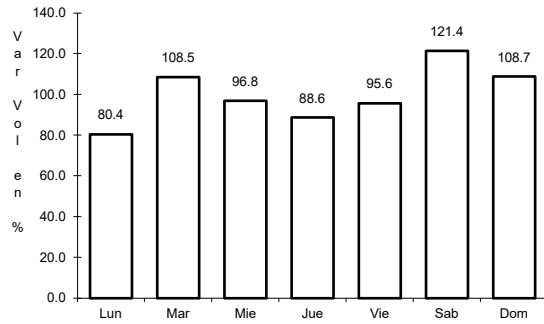
Tipo: 1

Sent: 0

16 CARR: Tecomán - Boca de Pascuales

CLAVE: 06226

ruta: MEX-200



Km: 0.00

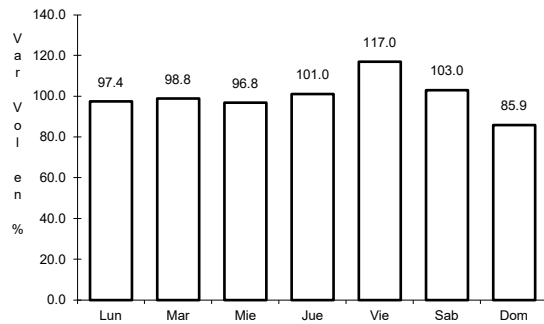
Tipo: 3

Sent: 0

17 CARR: Armería - Manzanillo (Cuota)

CLAVE: 06585

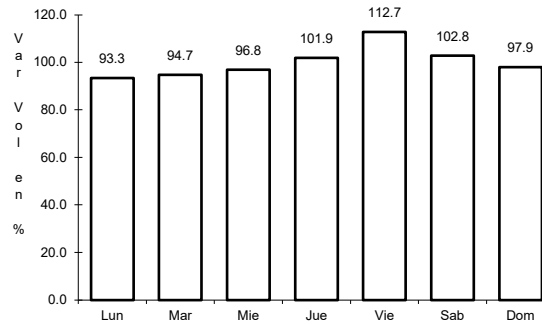
ruta: MEX-200D



Km: 44.00

Tipo: 3

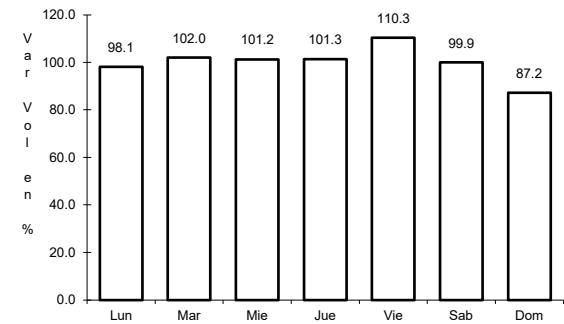
Sent: 1



Km: 44.00

Tipo: 3

Sent: 2



Km: 88.00

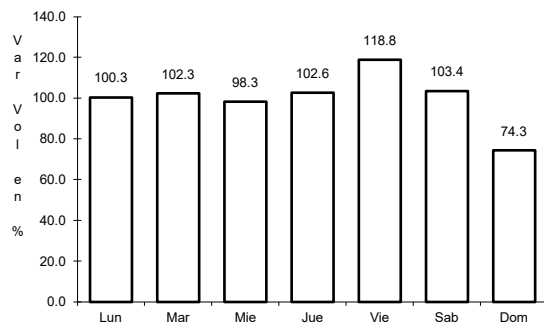
Tipo: 3

Sent: 1

18 CARR: Guadalajara - Colima (Cuota)

CLAVE: 00118

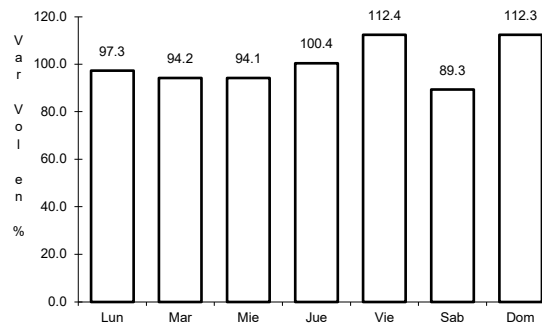
ruta: MEX-054D



Km: 7.70

Tipo: 1

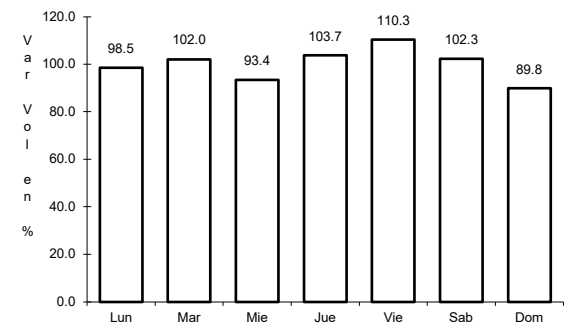
Sent: 1



Km: 7.70

Tipo: 1

Sent: 2



Km: 140.70

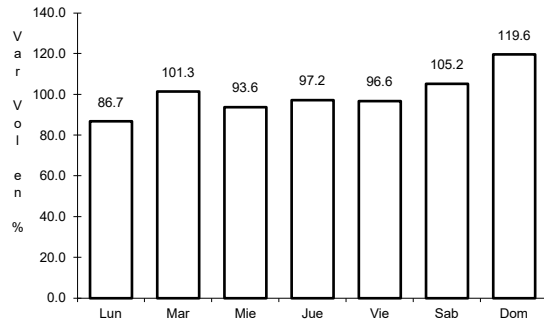
Tipo: 3

Sent: 1

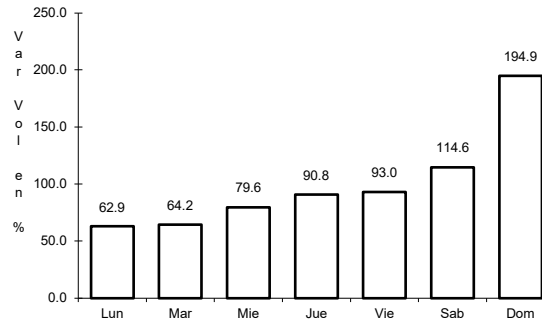
19 CARR: Armería - Playa El Paraíso

CLAVE: 06580

ruta: COL



Km: 0.00 Tipo: 3 Sent: 0

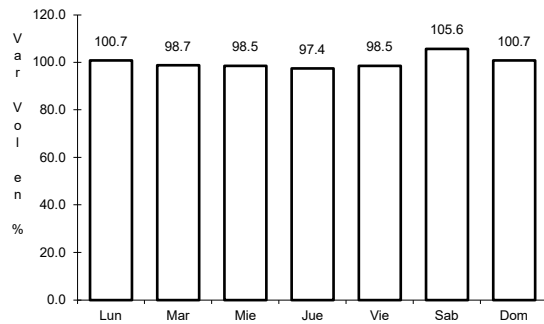


Km: 7.50 Tipo: 1 Sent: 0

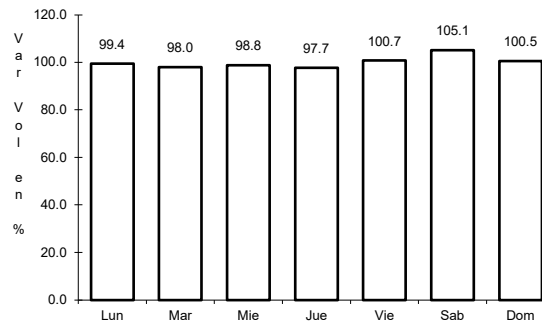
20 CARR: Colima - Comala

CLAVE: 06016

ruta: COL-016



Km: 3.00 Tipo: 3 Sent: 1

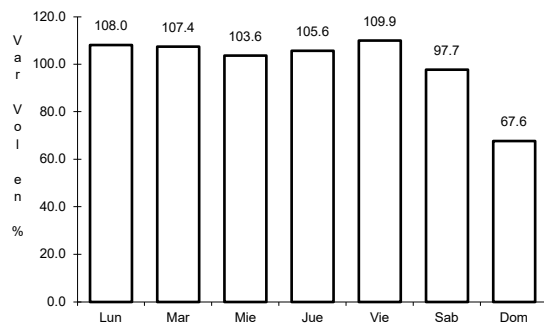


Km: 3.00 Tipo: 3 Sent: 2

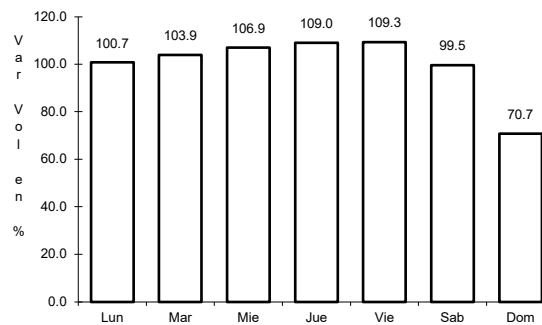
21 CARR: Colima - Coquimatlán

CLAVE: 06034

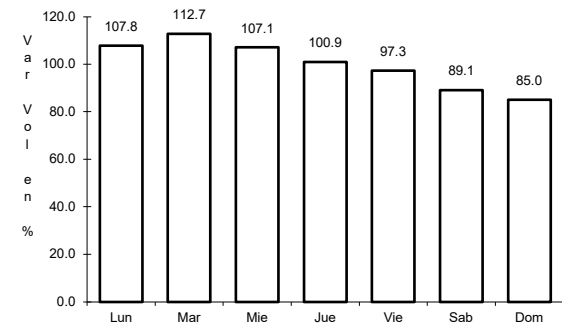
ruta: COL-034



Km: 3.00 Tipo: 3 Sent: 1



Km: 3.00 Tipo: 3 Sent: 2

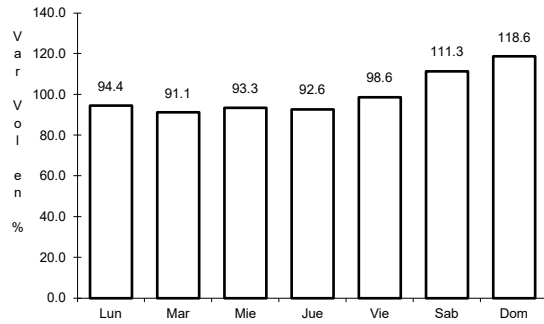


Km: 11.00 Tipo: 1 Sent: 1

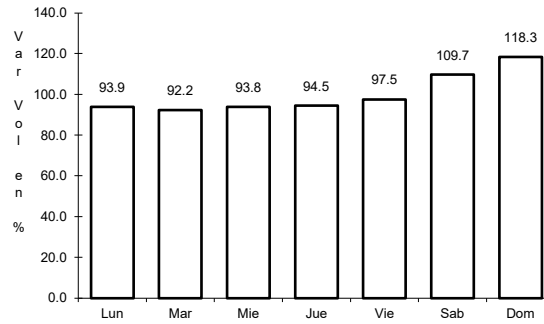
22 CARR: Comala - San Antonio

CLAVE: 06030

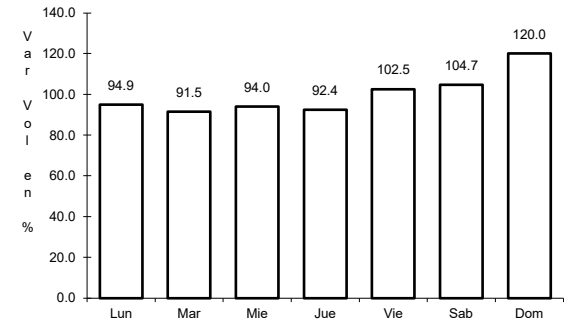
ruta: COL-016



Km: 0.00 Tipo: 3 Sent: 1



Km: 0.00 Tipo: 3 Sent: 2

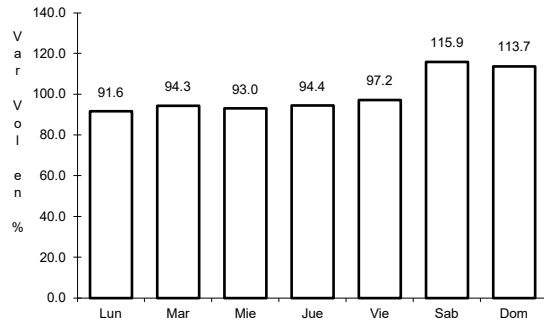


Km: 10.00 Tipo: 1 Sent: 0

23 CARR: Coquimatlán - Pueblo Juárez

CLAVE: 06029

ruta: COL-034

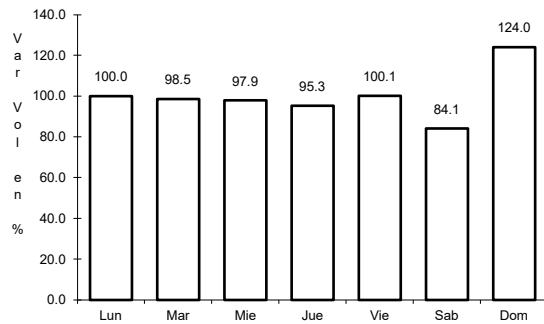


Km: 0.00 Tipo: 3 Sent: 0

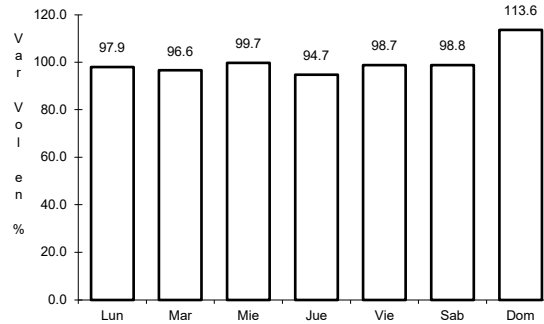
24 CARR: Costera Laguna de Cuyutlán

CLAVE: 06010

ruta: COL



Km: 0.00 Tipo: 3 Sent: 0

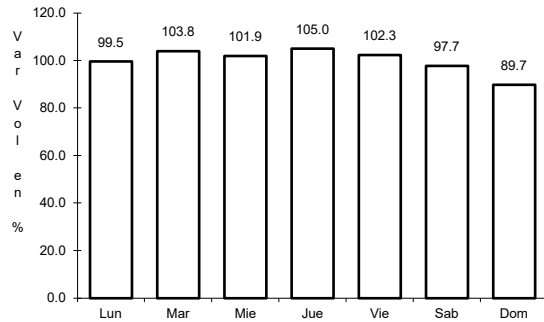


Km: 13.00 Tipo: 1 Sent: 0

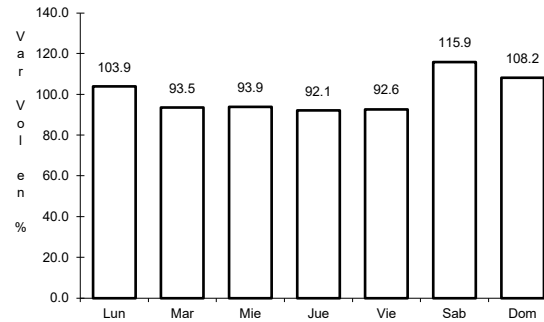
25 CARR: Cuauhtémoc - Colima

CLAVE: 06019

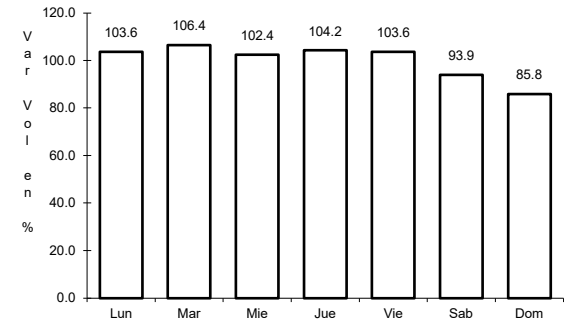
ruta: COL-019



Km: 0.00 Tipo: 3 Sent: 0



Km: 19.50 Tipo: 1 Sent: 1

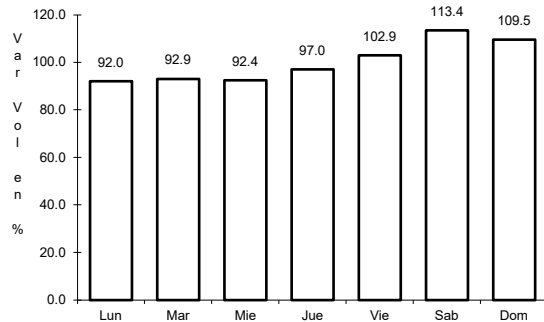


Km: 19.50 Tipo: 1 Sent: 2

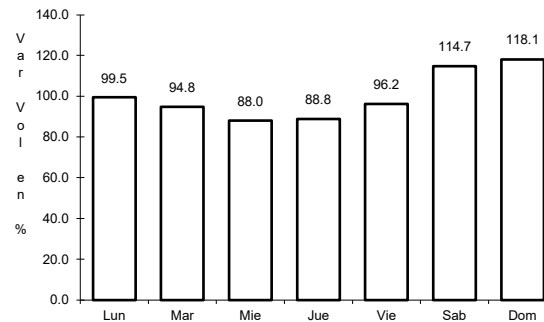
26 CARR: Libramiento de Comala

CLAVE:

ruta: COL-016



Km: 0.00 Tipo: 3 Sent: 0

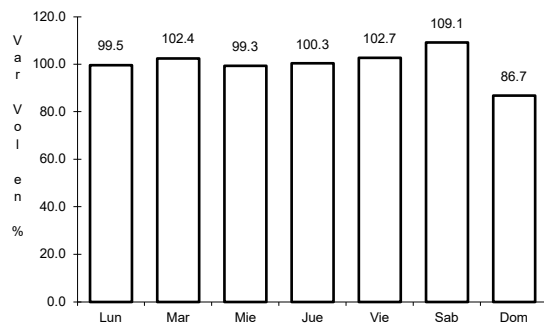


Km: 7.10 Tipo: 1 Sent: 0

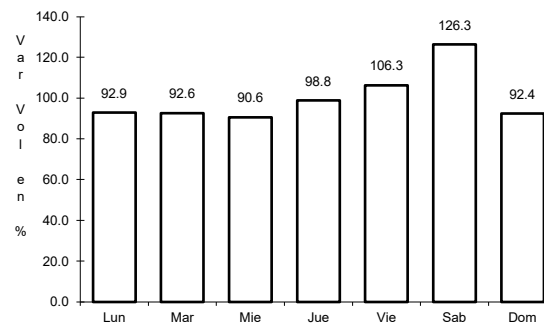
27 CARR: Libramiento de Tecomán

CLAVE: 06122

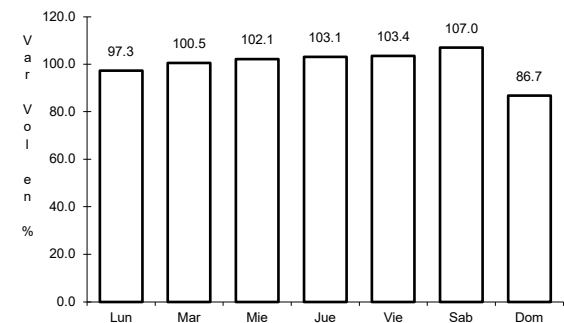
ruta: COL



Km: 0.00 Tipo: 3 Sent: 1



Km: 0.00 Tipo: 3 Sent: 2

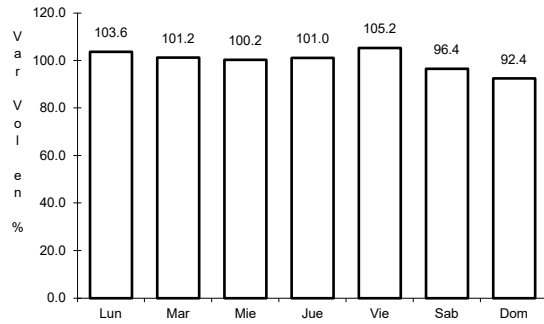


Km: 7.90 Tipo: 1 Sent: 1

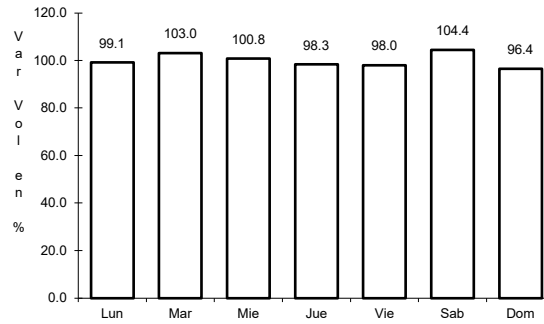
28 CARR: Libramiento Poniente Arco Sur de Tecomán

CLAVE:

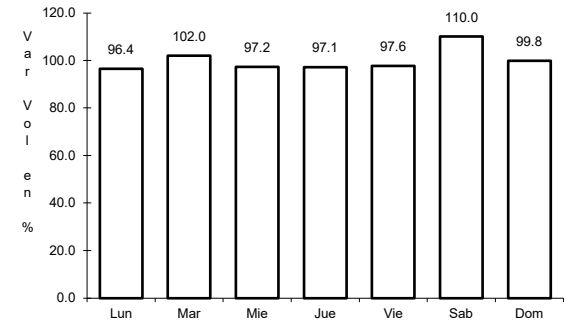
ruta: COL



Km: 0.00 Tipo: 3 Sent: 0



Km: 4.60 Tipo: 3 Sent: 0

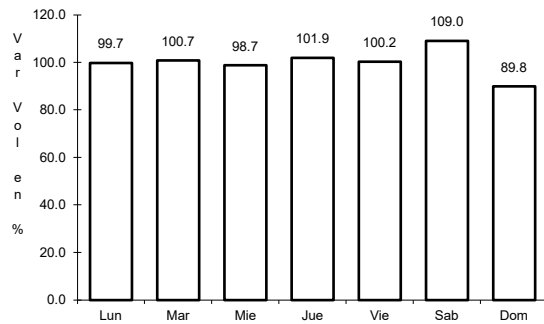


Km: 6.90 Tipo: 3 Sent: 0

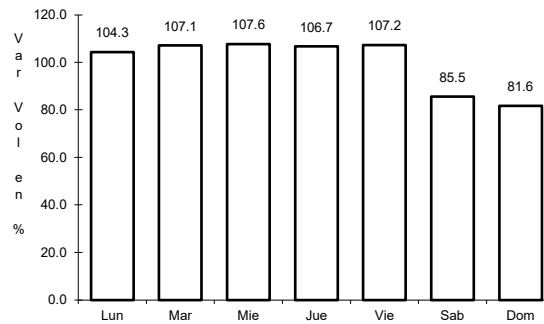
29 CARR: Libramiento Poniente de Colima

CLAVE: 06122

ruta: COL



Km: 4.00 Tipo: 3 Sent: 1

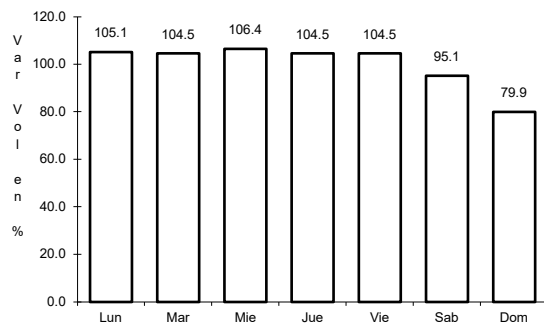


Km: 4.00 Tipo: 3 Sent: 2

30 CARR: Los Limones - Loma de Juárez

CLAVE: 06122

ruta: COL

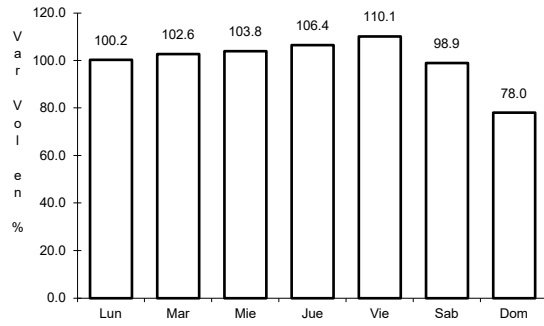


Km: 5.77 Tipo: 1 Sent: 0

31 CARR: Puerta de Caleras - Madrid

CLAVE: 06014

RUTA: COL-014

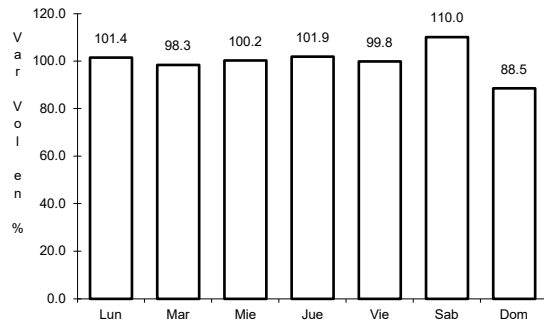


Km: 0.00 Tipo: 3 Sent: 0

32 CARR: Ramal a Aeropuerto de Colima

CLAVE: 06224

RUTA: COL

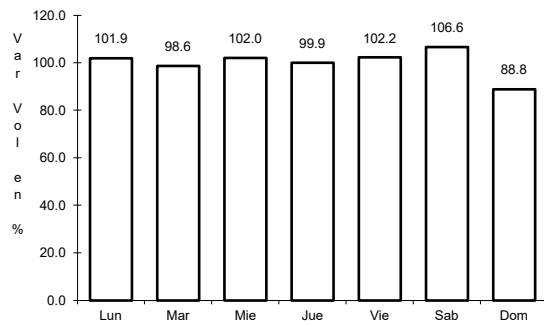


Km: 0.00 Tipo: 3 Sent: 0

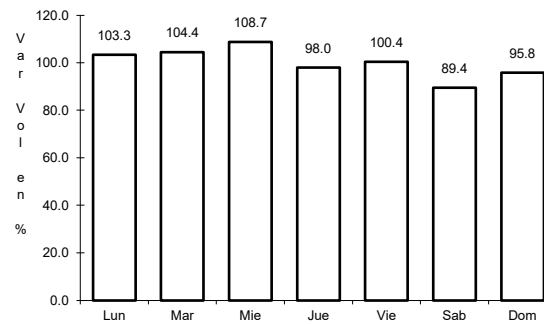
33 CARR: Ramal a Aeropuerto Manzanillo

CLAVE: 06582

RUTA: COL



Km: 0.00 Tipo: 3 Sent: 0

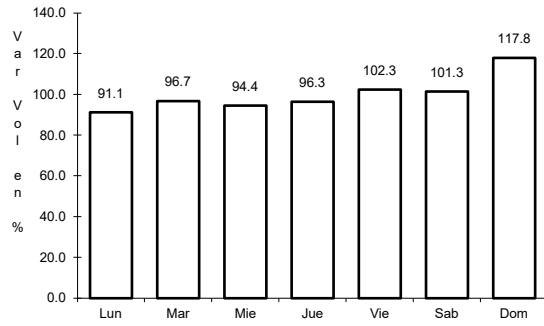


Km: 5.50 Tipo: 1 Sent: 0

34 CARR: Ramal a Camotlán de Miraflores

CLAVE: 06009

ruta: COL



Km: 0.00

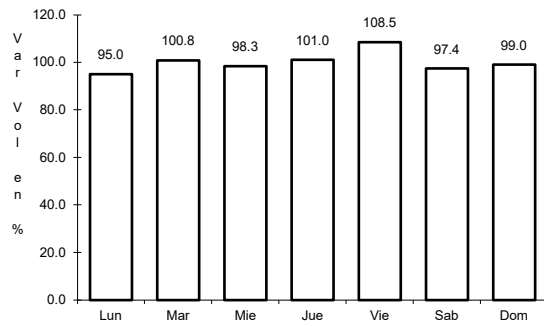
Tipo: 3

Sent: 0

35 CARR: Ramal a Ixtlahuacán

CLAVE: 06577

ruta: COL-005



Km: 0.00

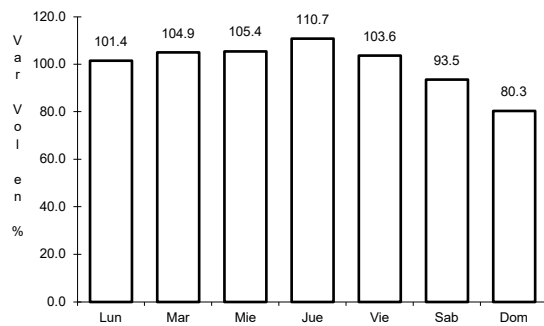
Tipo: 3

Sent: 0

36 CARR: Ramal a Las Brisas

CLAVE: 06571

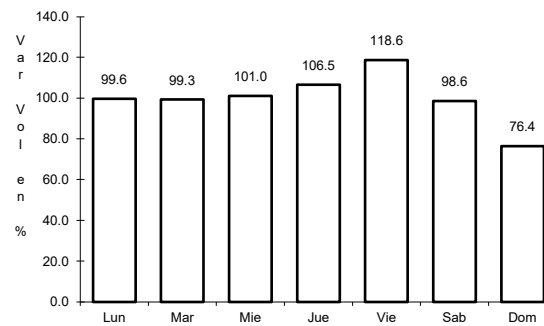
ruta: COL



Km: 0.00

Tipo: 3

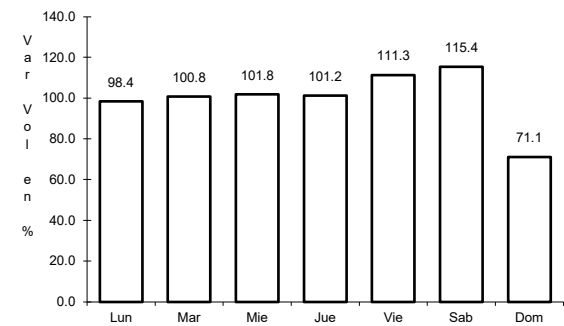
Sent: 0



Km: 0.00

Tipo: 3

Sent: 1



Km: 0.00

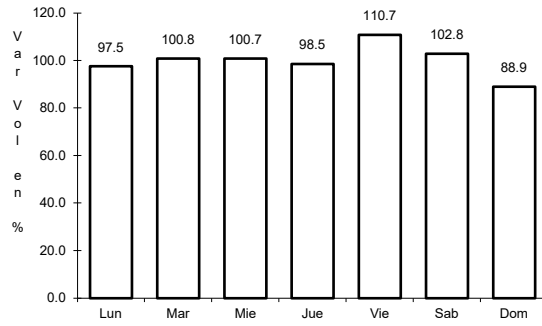
Tipo: 3

Sent: 2

37 CARR: Ramal a Los Tepames

CLAVE: 06004

RUTA: COL-004



Km: 0.00

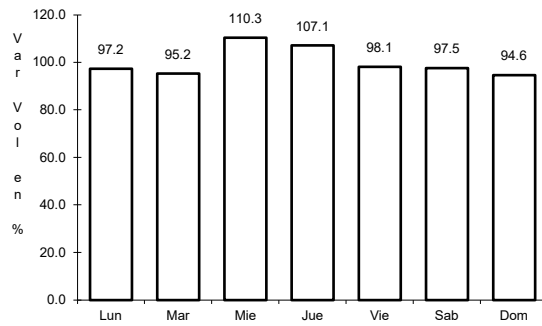
Tipo: 3

Sent: 0

38 CARR: Ramal a Rancho Valle Nuevo

CLAVE: 06583

RUTA: COL



Km: 0.00

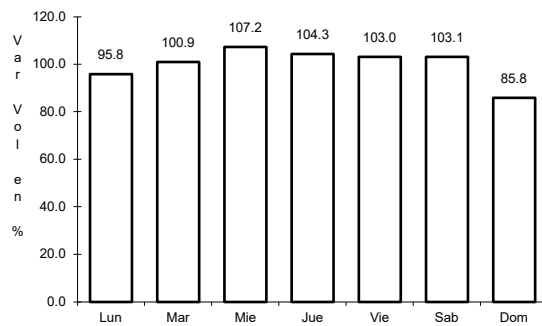
Tipo: 3

Sent: 0

39 CARR: Ramal a Rincón de López

CLAVE: 06578

RUTA: COL



Km: 0.00

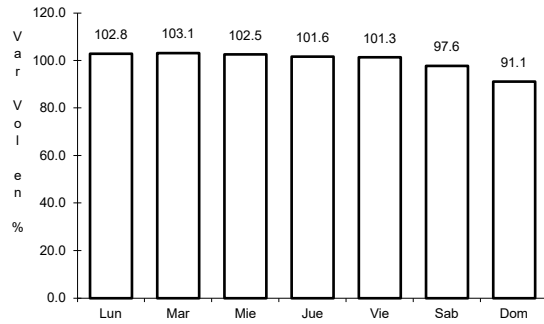
Tipo: 3

Sent: 0

40 CARR: Ramal a Tecuanillo

CLAVE: 06009

RUTA: COL-009



Km: 0.00

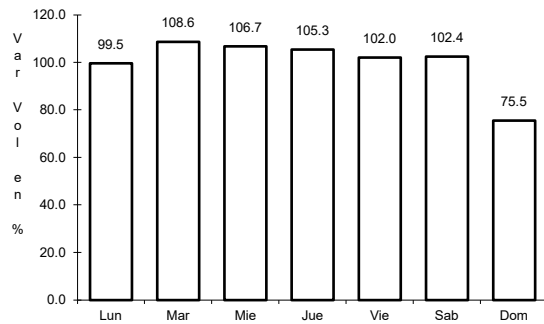
Tipo: 3

Sent: 0

41 CARR: T. C. (Guadalajara - Colima Cuota) - Quesería

CLAVE: 06001

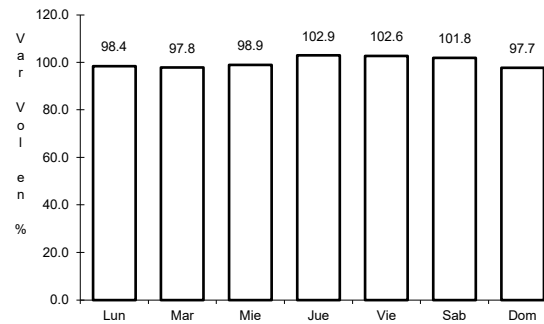
RUTA: COL-001



Km: 20.12

Tipo: 3

Sent: 0



Km: 30.00

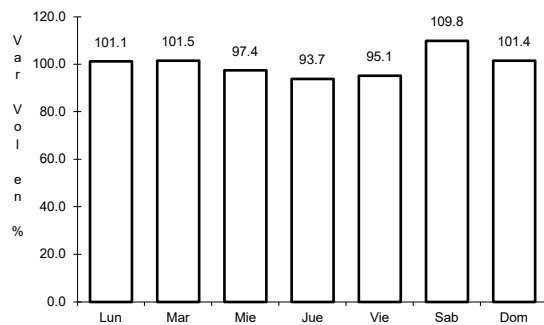
Tipo: 1

Sent: 0

42 CARR: Tecomán - La Mascota

CLAVE: 06572

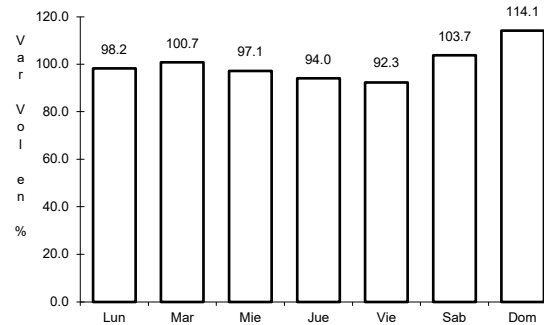
RUTA: COL



Km: 0.00

Tipo: 3

Sent: 0



Km: 2.70

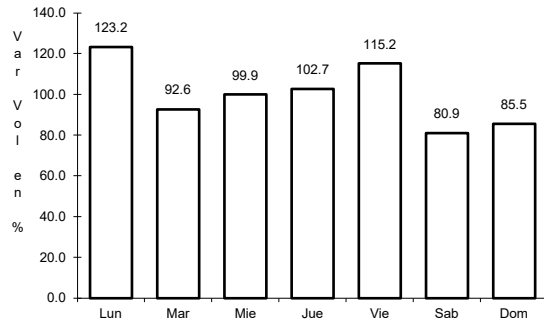
Tipo: 3

Sent: 0

43 CARR: Trapichillos - Estación Alzada

CLAVE: 06003

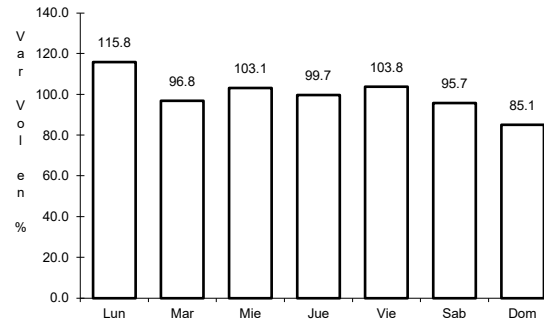
RUTA: COL-003



Km: 0.00

Tipo: 3

Sent: 0



Km: 12.50

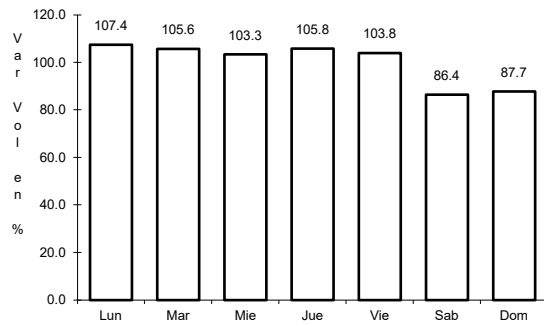
Tipo: 1

Sent: 0

44 CARR: Villa de Álvarez - Minatitlán

CLAVE: 06040

RUTA: COL



Km: 0.00

Tipo: 3

Sent: 0

